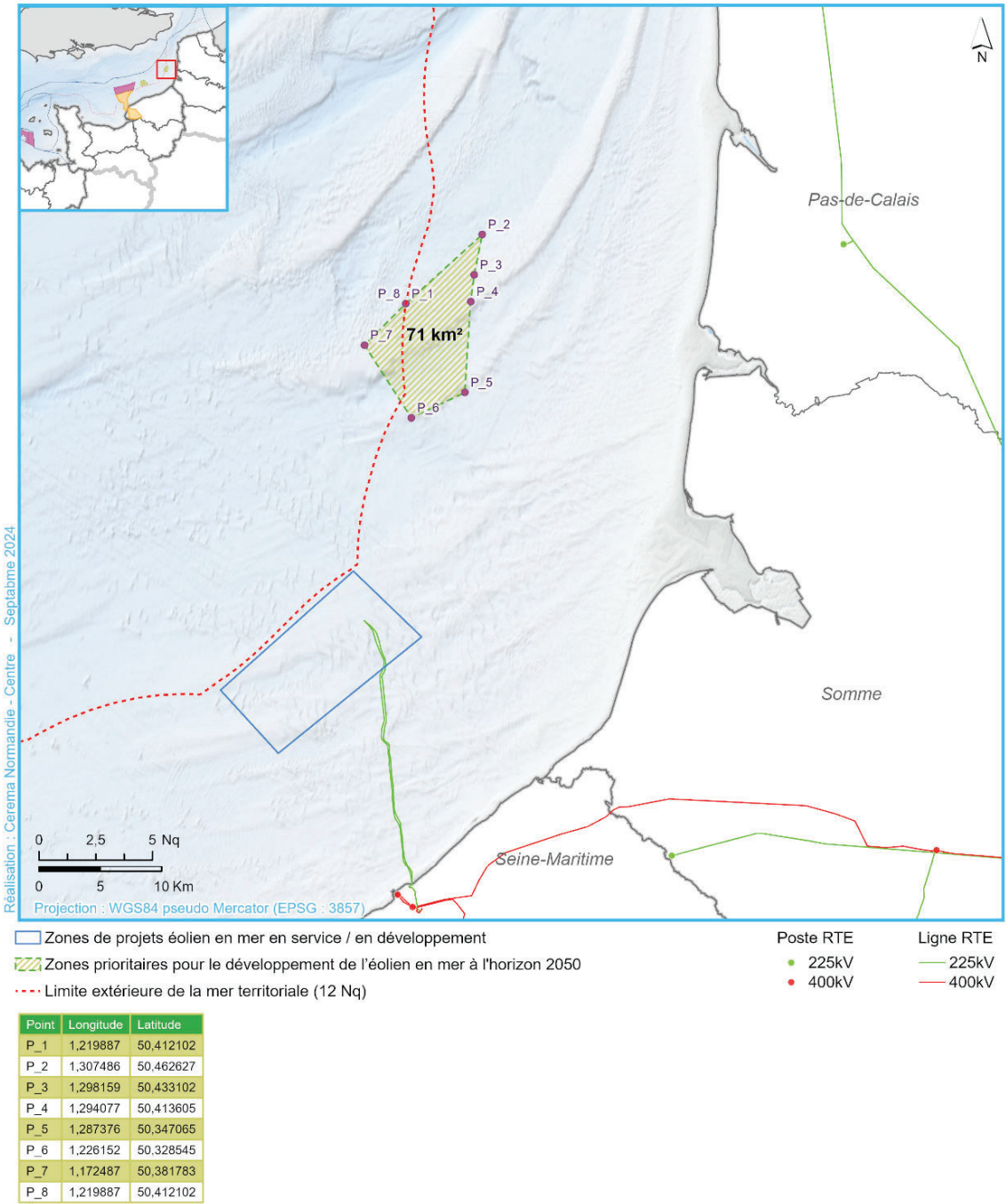


ANNEXE 10
COORDONNEES GEOGRAPHIQUES – EOLIEN EN MER

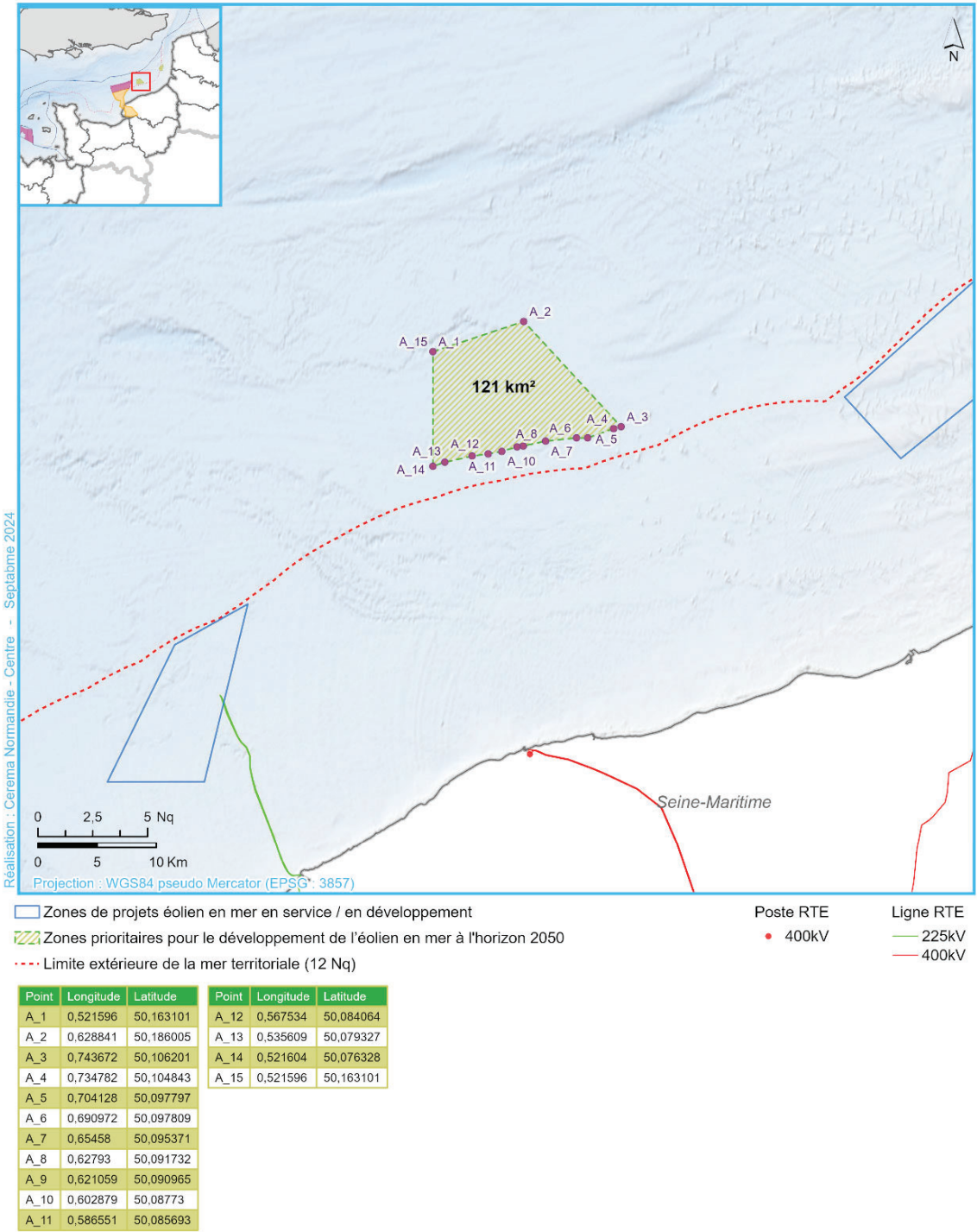
Façade MEMN - Picard Opale (PO)
Coordonnées géographiques



Toutes les coordonnées sont exprimées en degrés décimaux dans le système géodésique WGS84

Façade MEMN - Albatre Grand Large (AGL)

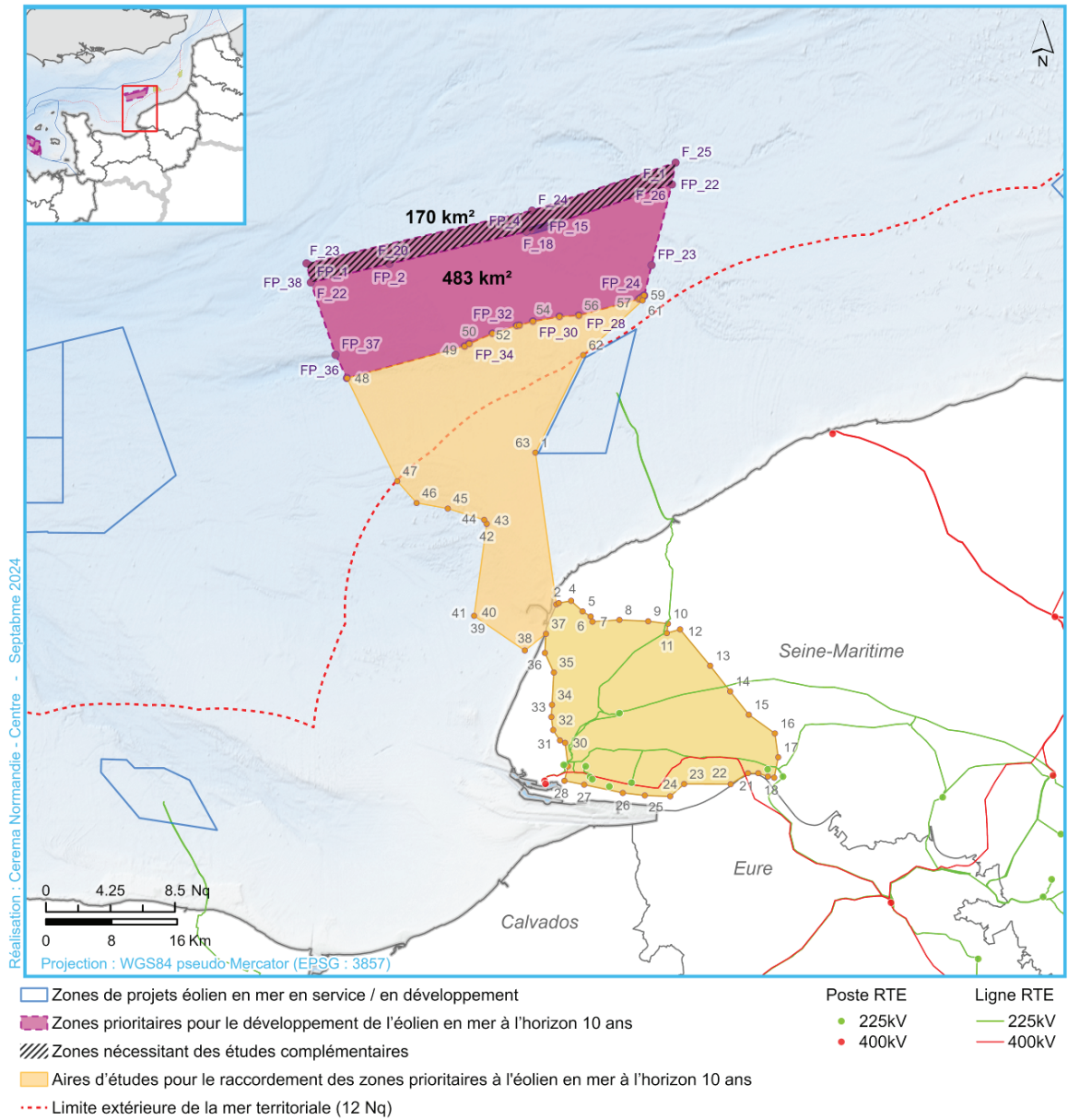
Coordonnées géographiques



Toutes les coordonnées sont exprimées en degrés décimaux dans le système géodésique WGS84

Façade MEMN - Fécamp Grand Large (FGL)

Coordonnées géographiques



Toutes les coordonnées sont exprimées en degrés décimaux dans le système géodésique WGS84

Façade MEMN - Fécamp Grand Large (FGL)
Zone prioritaire au développement de l'éolien en mer

Point	Longitude	Latitude	Point	Longitude	Latitude	Point	Longitude	Latitude
FP_1	-0.248095	50.022652	FP_28	0.205822	49.986744	F_17	0.126896	50.079338
FP_2	-0.115051	50.043053	FP_29	0.173108	49.985409	F_18	0.124798	50.079025
FP_3	-0.11494	50.043068	FP_30	0.128411	49.980396	F_19	0.11735	50.077915
FP_4	0.11735	50.077915	FP_31	0.10513	49.976059	F_20	-0.11494	50.043068
FP_5	0.124798	50.079025	FP_32	0.100933	49.975502	F_21	-0.115051	50.043053
FP_6	0.126896	50.079338	FP_33	0.059745	49.967075	F_22	-0.248095	50.022652
FP_7	0.128531	50.079586	FP_34	0.020142	49.95594	F_23	-0.255359	50.04351
FP_8	0.130163	50.079842	FP_35	0.012677	49.953224	F_24	0.126762	50.100819
FP_9	0.131793	50.080101	FP_36	-0.186665	49.91861	F_25	0.36984	50.152863
FP_10	0.13342	50.080368	FP_37	-0.206167	49.943996	F_26	0.363666	50.129276
FP_11	0.135045	50.080643	FP_38	-0.248095	50.022652			
FP_12	0.136666	50.080921	F_1	0.363666	50.129276			
FP_13	0.138285	50.081211	F_2	0.151126	50.083752			
FP_14	0.139901	50.081505	F_3	0.149532	50.083412			
FP_15	0.141514	50.081806	F_4	0.147935	50.083076			
FP_16	0.143124	50.082115	F_5	0.146335	50.082748			
FP_17	0.144731	50.082428	F_6	0.144731	50.082428			
FP_18	0.146335	50.082748	F_7	0.143124	50.082115			
FP_19	0.147935	50.083076	F_8	0.141514	50.081806			
FP_20	0.149532	50.083412	F_9	0.139901	50.081505			
FP_21	0.151126	50.083752	F_10	0.138285	50.081211			
FP_22	0.363666	50.129276	F_11	0.136666	50.080921			
FP_23	0.329138	50.04142	F_12	0.135045	50.080643			
FP_24	0.316743	50.008434	F_13	0.13342	50.080368			
FP_25	0.314368	50.007198	F_14	0.131793	50.080101			
FP_26	0.310291	50.005516	F_15	0.130163	50.079842			
FP_27	0.308042	50.004482	F_16	0.128531	50.079586			

Aires d'étude maritime et terrestre pour le raccordement

Point	Longitude	Latitude	Point	Longitude	Latitude	Point	Longitude	Latitude
1	0.132578	49.837177	28	0.181459	49.477686	55	0.173108	49.985409
2	0.16803	49.671293	29	0.187772	49.493574	56	0.205822	49.986744
3	0.171919	49.6728	30	0.18279	49.519366	57	0.308042	50.004482
4	0.192857	49.675115	31	0.173835	49.522025	58	0.310291	50.005515
5	0.212323	49.663725	32	0.16247	49.533409	59	0.314368	50.0072
6	0.226001	49.658004	33	0.159478	49.547677	60	0.316743	50.008433
7	0.229076	49.652404	34	0.160671	49.560967	61	0.314186	50.003172
8	0.274717	49.65422	35	0.163554	49.596613	62	0.213514	49.943594
9	0.323643	49.652896	36	0.148403	49.618159	63	0.132578	49.837177
10	0.356892	49.65012	37	0.150222	49.639107			
11	0.355208	49.639815	38	0.11451	49.620654			
12	0.377514	49.643903	39	0.028659	49.658691			
13	0.42844	49.604097	40	0.028683	49.658806			
14	0.462332	49.575988	41	0.028659	49.658816			
15	0.493944	49.550328	42	0.050007	49.759475			
16	0.538089	49.529693	43	0.050012	49.759571			
17	0.5437	49.503462	44	0.045776	49.763808			
18	0.536966	49.481106	45	-0.016052	49.776173			
19	0.526491	49.482321	46	-0.068643	49.78225			
20	0.510066	49.485858	47	-0.101411	49.80609			
21	0.492295	49.48598	48	-0.186526	49.91841			
22	0.463302	49.473948	49	0.012677	49.953226			
23	0.384272	49.474039	50	0.020142	49.955942			
24	0.360843	49.460424	51	0.059745	49.967077			
25	0.317634	49.461397	52	0.100933	49.975501			
26	0.280597	49.464315	53	0.10513	49.976059			
27	0.215128	49.47331	54	0.128411	49.980396			

Toutes les coordonnées sont exprimées en degrés décimaux dans le système géodésique WGS84

Façade MEMN - Roches Douvres (RD)

Zone prioritaire au développement de l'éolien en mer

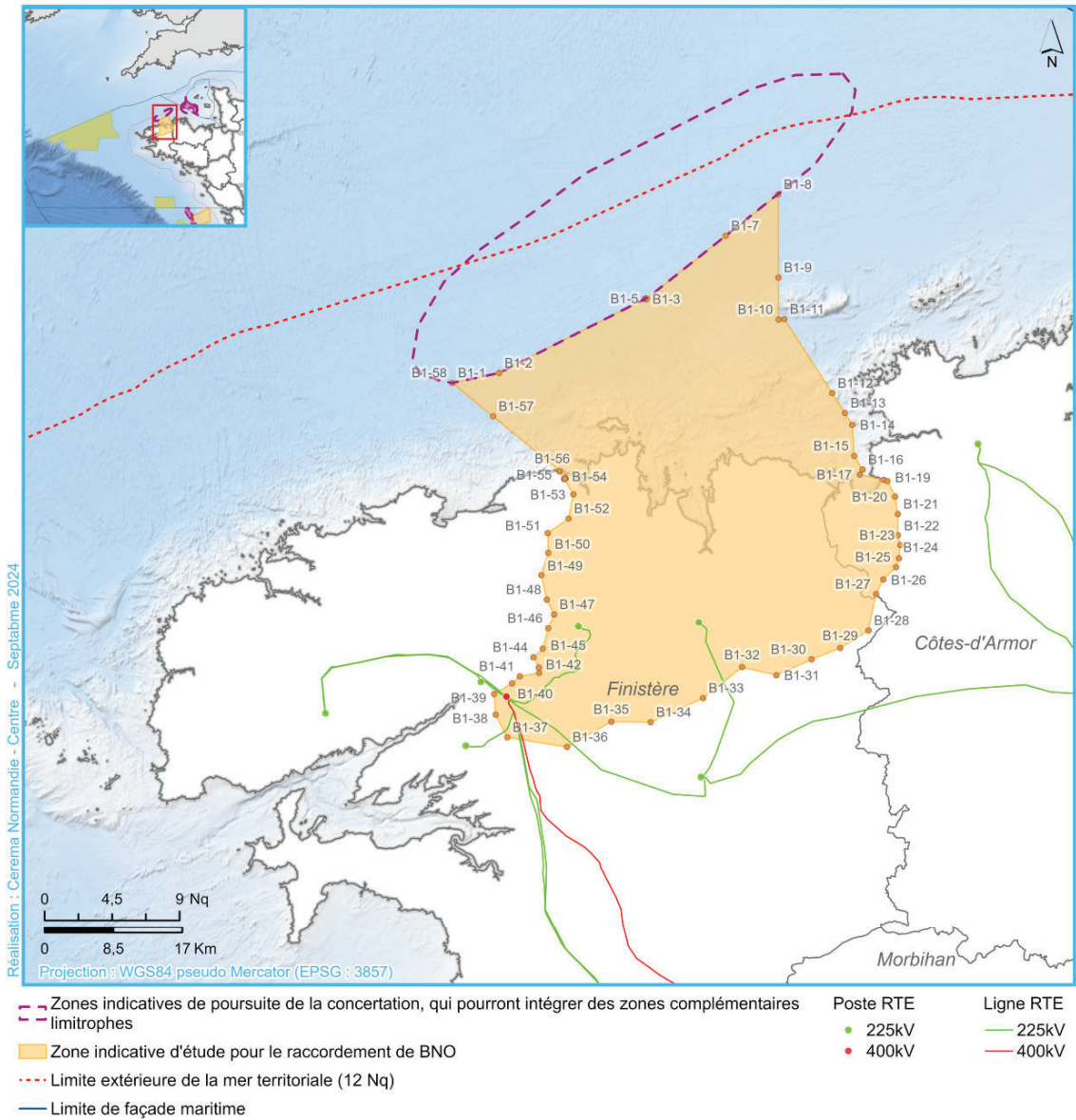
Point	Longitude	Latitude	Point	Longitude	Latitude	Point	Longitude	Latitude	Point	Longitude	Latitude
R_1	-2,933172	49,30344	R_43	-2,754956	49,144287	EO_3	-3,020902	49,441002	EO_45	-2,954802	49,317299
R_2	-2,906484	49,299179	R_44	-2,770173	49,140495	EO_4	-3,020603	49,431599	EO_46	-2,950503	49,313801
R_3	-2,893068	49,289177	R_45	-2,785304	49,136234	EO_5	-3,019601	49,422699	EO_47	-2,948902	49,3125
R_4	-2,872789	49,276588	R_46	-2,790695	49,136024	EO_6	-3,018002	49,413799	EO_48	-2,947202	49,311298
R_5	-2,850845	49,265266	R_47	-2,798945	49,136898	EO_7	-3,017677	49,412472	EO_49	-2,945502	49,310001
R_6	-2,842893	49,261532	R_48	-2,804253	49,140003	EO_8	-3,015703	49,4044	EO_50	-2,943802	49,308701
R_7	-2,814105	49,249546	R_49	-2,807069	49,144684	EO_9	-3,012702	49,395199	EO_51	-2,942102	49,307499
R_8	-2,783465	49,239731	R_50	-2,807955	49,156071	EO_10	-3,009201	49,386501	EO_52	-2,940402	49,306301
R_9	-2,751354	49,232204	R_51	-2,809191	49,16523	EO_11	-3,004903	49,377499	EO_53	-2,939002	49,305199
R_10	-2,749658	49,231941	R_52	-2,812955	49,16914	EO_12	-3,000002	49,368599	EO_54	-2,937302	49,3041
R_11	-2,718167	49,227066	R_53	-2,829077	49,173687	EO_13	-2,998902	49,366901	EO_55	-2,933172	49,30344
R_12	-2,69018	49,224842	R_54	-2,840504	49,174442	EO_14	-2,997903	49,365299	EO_56	-2,939715	49,302094
R_13	-2,665151	49,221226	R_55	-2,858299	49,169315	EO_15	-2,997002	49,3638	EO_57	-2,963393	49,295967
R_14	-2,669969	49,217594	R_56	-2,86791	49,164501	EO_16	-2,995603	49,361702	EO_58	-2,986204	49,28857
R_15	-2,682524	49,204472	R_57	-2,88011	49,154869	EO_17	-2,994601	49,360199	EO_59	-3,007986	49,279957
R_16	-2,691827	49,190235	R_58	-2,889977	49,143017	EO_18	-2,992802	49,357601	EO_60	-3,028587	49,270176
R_17	-2,697656	49,175224	R_59	-2,899133	49,127129	EO_19	-2,991001	49,355099	EO_61	-3,047865	49,259308
R_18	-2,699875	49,159805	R_60	-2,903441	49,119286	EO_20	-2,989903	49,3536	EO_62	-3,048237	49,25906
R_19	-2,698433	49,144348	R_61	-2,906818	49,115452	EO_21	-2,988702	49,3521	EO_63	-3,048237	49,369835
R_20	-2,678737	49,051605	R_62	-2,908553	49,112423	EO_22	-2,987601	49,350601	EO_64	-3,048254	49,440708
R_21	-2,678603	49,003998	R_63	-2,92112	49,098228	EO_23	-2,986402	49,349098	EE_1	-2,665151	49,221226
R_22	-2,789598	49,043011	R_64	-2,928855	49,091892	EO_24	-2,985203	49,347599	EE_2	-2,663365	49,220959
R_23	-2,789525	49,043076	R_65	-3,053338	49,135803	EO_25	-2,984001	49,346199	EE_3	-2,632256	49,218601
R_24	-2,769979	49,058514	R_66	-3,141875	49,166592	EO_26	-2,982802	49,3447	EE_4	-2,626607	49,218552
R_25	-2,758324	49,067822	R_67	-3,134249	49,179939	EO_27	-2,981502	49,343201	EE_5	-2,607677	49,217323
R_26	-2,754387	49,07423	R_68	-3,123385	49,194992	EO_28	-2,980201	49,341801	EE_6	-2,580591	49,217403
R_27	-2,75426	49,081585	R_69	-3,11064	49,2094	EO_29	-2,979002	49,340298	EE_7	-2,567228	49,216805
R_28	-2,755724	49,087772	R_70	-3,0961	49,223061	EO_30	-2,977603	49,338898	EE_8	-2,559955	49,216969
R_29	-2,757132	49,08992	R_71	-3,084724	49,232239	EO_31	-2,976303	49,337498	EE_9	-2,526725	49,058537
R_30	-2,759077	49,095718	R_72	-3,083842	49,232937	EO_32	-2,975002	49,335999	EE_10	-2,526721	48,950565
R_31	-2,760441	49,109631	R_73	-3,081921	49,234608	EO_33	-2,973603	49,334599	EE_11	-2,678603	49,003998
R_32	-2,758209	49,116699	R_74	-3,065684	49,247421	EO_34	-2,971301	49,332199	EE_12	-2,678737	49,051605
R_33	-2,754993	49,120777	R_75	-3,048237	49,25906	EO_35	-2,969902	49,330898	EE_13	-2,698433	49,144348
R_34	-2,747971	49,125824	R_76	-3,047865	49,259308	EO_36	-2,968503	49,329502	EE_14	-2,699875	49,159805
R_35	-2,739784	49,129444	R_77	-3,028587	49,270176	EO_37	-2,967003	49,328098	EE_15	-2,697656	49,175224
R_36	-2,736466	49,132877	R_78	-3,007986	49,279957	EO_38	-2,965602	49,326698	EE_16	-2,691827	49,190235
R_37	-2,737144	49,137619	R_79	-2,986204	49,28857	EO_39	-2,964101	49,325298	EE_17	-2,682524	49,204472
R_38	-2,740321	49,1408	R_80	-2,963393	49,295967	EO_40	-2,962601	49,324001	EE_18	-2,669969	49,217594
R_39	-2,748364	49,143803	R_81	-2,939715	49,302094	EO_41	-2,961103	49,322601	EE_19	-2,665151	49,221226
R_40	-2,749453	49,143883	R_82	-2,933172	49,30344	EO_42	-2,959502	49,321301			
R_41	-2,749655	49,143902	EO_1	-3,048254	49,440708	EO_43	-2,958002	49,319901			
R_42	-2,749651	49,143894	EO_2	-3,020624	49,449825	EO_44	-2,956403	49,3186			

Réalisation : Cerema Normandie - Centre - Septembre 2024

Toutes les coordonnées sont exprimées en degrés décimaux dans le système géodésique WGS84

Façade NAMO - Bretagne Nord Ouest (BNO)

Coordonnées géographiques



Toutes les coordonnées sont exprimées en degrés décimaux dans le système géodésique WGS84

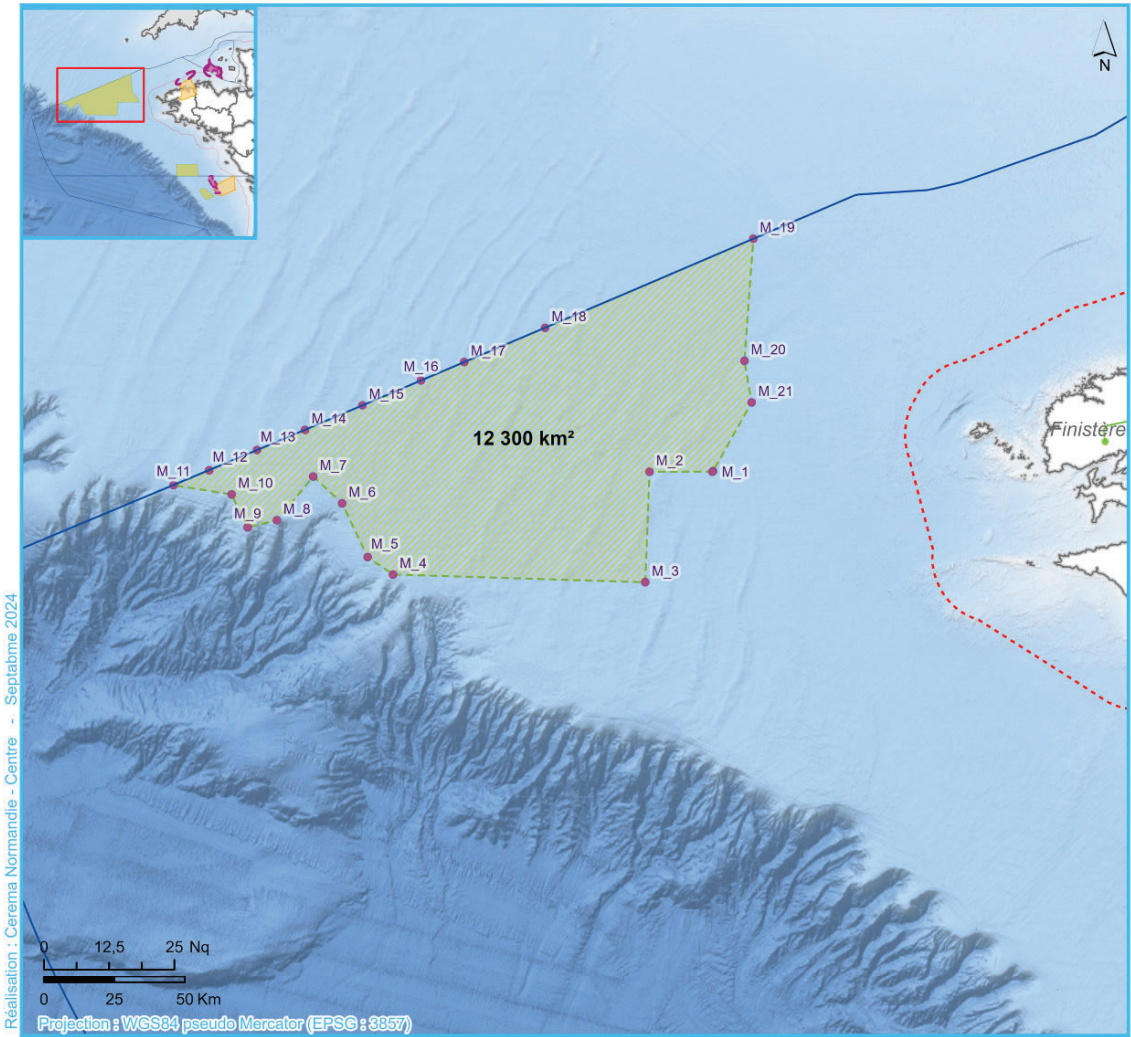
Façade NAMO - Bretagne Nord Ouest (BNO)

Zone indicative d'étude pour le raccordement

Point	Longitude	Latitude	Point	Longitude	Latitude	Point	Longitude	Latitude
B1-1	-4.283948	48.791907	B1-28	-3.586734	48.5176	B1-55	-4.104309	48.694213
B1-2	-4.205833	48.802845	B1-29	-3.63397	48.498245	B1-56	-4.104356	48.694547
B1-3	-3.961832	48.88448	B1-30	-3.681948	48.485494	B1-57	-4.215861	48.754925
B1-4	-3.959229	48.884289	B1-31	-3.74088	48.468028	B1-58	-4.283948	48.791907
B1-5	-3.959222	48.884976	B1-32	-3.798622	48.476924	B1-59	-4.095864	48.685911
B1-6	-3.958079	48.884891	B1-33	-3.863867	48.44249	B1-60	-4.095807	48.68583
B1-7	-3.825992	48.954074	B1-34	-3.951869	48.415639	B1-61	-4.095777	48.685844
B1-8	-3.737846	48.999665	B1-35	-4.017782	48.416208	B1-62	-4.095765	48.685876
B1-9	-3.737721	48.90808	B1-36	-4.091987	48.388069	B1-63	-4.095711	48.685973
B1-10	-3.737317	48.861791	B1-37	-4.1921	48.398837	B1-64	-4.095593	48.685992
B1-11	-3.727664	48.862395	B1-38	-4.21159	48.424044	B1-65	-4.095287	48.686013
B1-12	-3.647321	48.78053	B1-39	-4.214175	48.446911	B1-66	-4.095152	48.686012
B1-13	-3.626048	48.758592	B1-40	-4.184173	48.458813	B1-67	-4.095047	48.686012
B1-14	-3.613892	48.745449	B1-41	-4.170891	48.466726	B1-68	-4.094999	48.686053
B1-15	-3.61056	48.711212	B1-42	-4.138634	48.470406	B1-69	-4.094985	48.686124
B1-16	-3.596506	48.695937	B1-43	-4.139238	48.476603	B1-70	-4.094924	48.686158
B1-17	-3.601185	48.690494	B1-44	-4.148078	48.487927	B1-71	-4.094789	48.686173
B1-18	-3.560987	48.684776	B1-45	-4.132632	48.497389	B1-72	-4.094724	48.686202
B1-19	-3.554995	48.683331	B1-46	-4.123317	48.520018	B1-73	-4.094721	48.686254
B1-20	-3.541877	48.666048	B1-47	-4.113749	48.535407	B1-74	-4.09477	48.686308
B1-21	-3.537375	48.646762	B1-48	-4.125794	48.551871	B1-75	-4.094886	48.686314
B1-22	-3.537437	48.623475	B1-49	-4.135088	48.57915	B1-76	-4.09498	48.686341
B1-23	-3.533355	48.612255	B1-50	-4.123339	48.603667	B1-77	-4.094986	48.686426
B1-24	-3.53569	48.597624	B1-51	-4.124074	48.625553	B1-78	-4.094975	48.686447
B1-25	-3.540428	48.587941	B1-52	-4.089414	48.641755	B1-79	-4.095864	48.685911
B1-26	-3.561998	48.574368	B1-53	-4.081275	48.668541			
B1-27	-3.574079	48.55811	B1-54	-4.096744	48.685786			

Toutes les coordonnées sont exprimées en degrés décimaux dans le système géodésique WGS84

Façade NAMO - Bretagne Grand Large (BGL)
Coordonnées géographiques



- Limite extérieure de la mer territoriale (12 Nq)
- Zones prioritaires pour le développement de l'éolien en mer à l'horizon 2050
- Limite de façade maritime

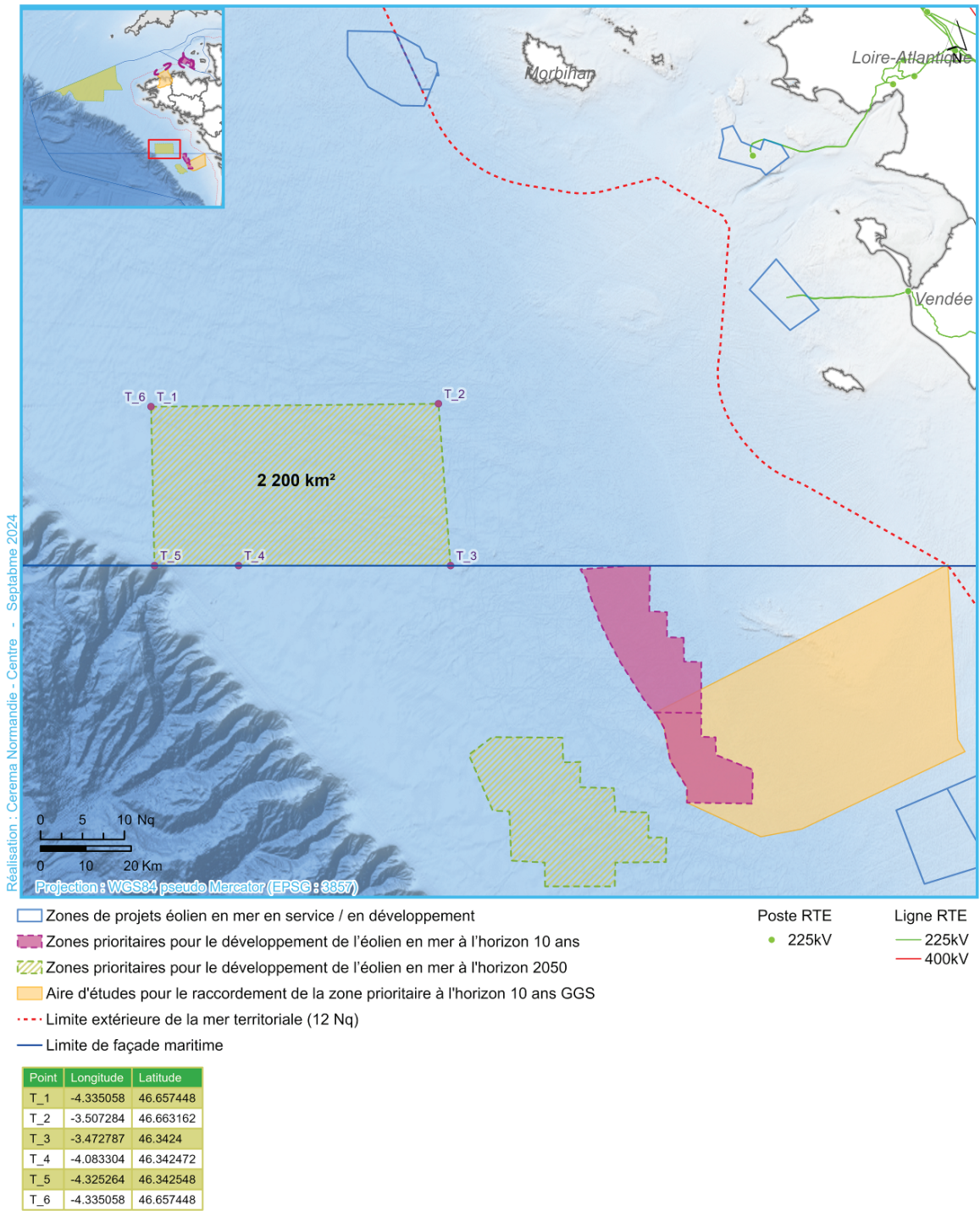
- Poste RTE
- 225kV
- Ligne RTE
- 225kV
- 400kV

Point	Longitude	Latitude	Point	Longitude	Latitude
M_1	-6,370549	48,329971	M_13	-8,54408	48,398594
M_2	-6,67111	48,329536	M_14	-8,315448	48,462631
M_3	-6,691081	47,977783	M_15	-8,041154	48,539913
M_4	-7,894626	48,002689	M_16	-7,761217	48,618668
M_5	-8,016652	48,057976	M_17	-7,554889	48,676632
M_6	-8,137753	48,229408	M_18	-7,16983	48,784634
M_7	-8,27638	48,314461	M_19	-6,175668	49,063698
M_8	-8,45001	48,175705	M_20	-6,218571	48,680389
M_9	-8,588914	48,152542	M_21	-6,183702	48,549076
M_10	-8,665671	48,257957	M_22	-6,368159	48,331467
M_11	-8,942555	48,286938	M_23	-6,370549	48,329971
M_12	-8,772712	48,334476			

Toutes les coordonnées sont exprimées en degrés décimaux dans le système géodésique WGS84

Façade NAMO - Centre Atlantique Grand Large (CAGL)

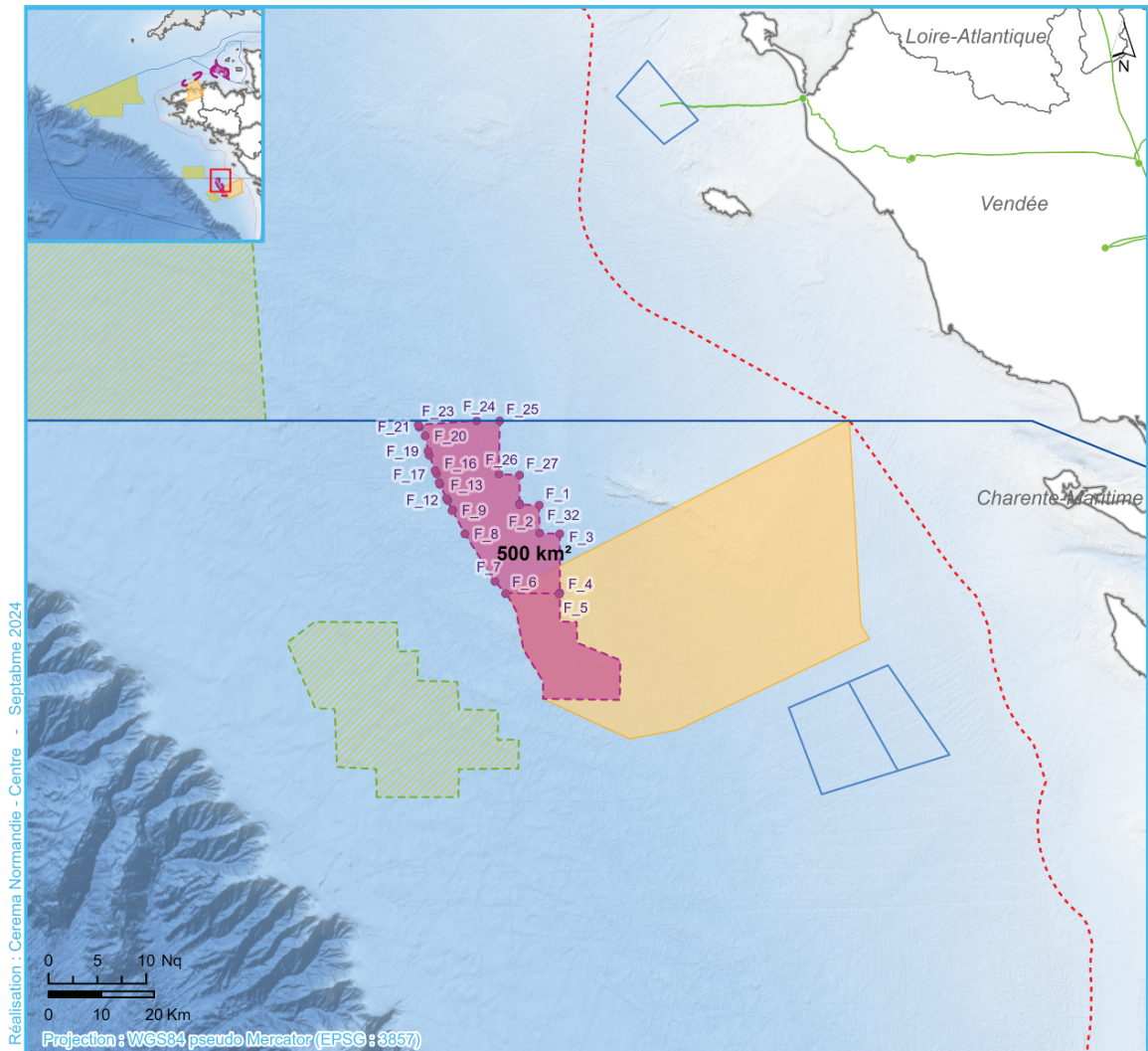
Coordonnées géographiques



Toutes les coordonnées sont exprimées en degrés décimaux dans le système géodésique WGS84

Façade SA - Golfe de Gascogne Nord (GGN)

Coordonnées géographiques



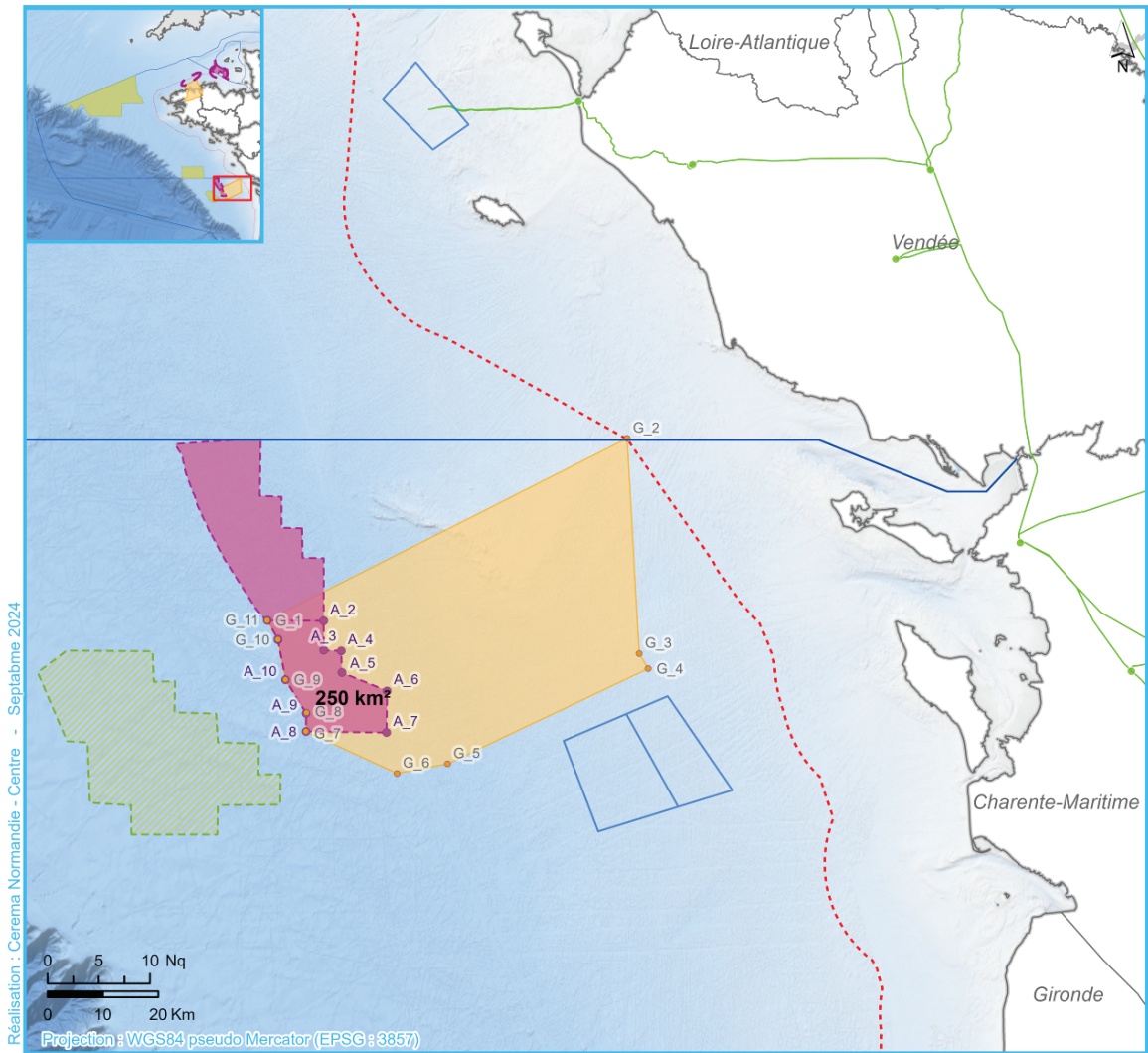
- Zones de projets éolien en mer en service / en développement
 ■ Zones prioritaires pour le développement de l'éolien en mer à l'horizon 10 ans
 ■ Aires d'études pour le raccordement des zones prioritaires à l'éolien en mer à l'horizon 10 ans
 ▨ Zones prioritaires pour le développement de l'éolien en mer à l'horizon 2050
 --- Limite extérieure de la mer territoriale (12 Nq)
- Poste RTE 225kV
 — Ligne RTE 225kV

Point	Longitude	Latitude	Point	Longitude	Latitude	Point	Longitude	Latitude	Point	Longitude	Latitude
F_1	-2.801539	46.198956	F_9	-3.014399	46.190399	F_17	-3.057115	46.257694	F_25	-2.898212	46.3419
F_2	-2.800166	46.151405	F_10	-3.013586	46.190781	F_18	-3.071228	46.283787	F_26	-2.900272	46.251762
F_3	-2.750727	46.150455	F_11	-3.015715	46.189831	F_19	-3.074125	46.290733	F_27	-2.84946	46.249863
F_4	-2.750727	46.049519	F_12	-3.025771	46.206852	F_20	-3.081789	46.316338	F_28	-2.84946	46.201408
F_5	-2.752101	46.047611	F_13	-3.029183	46.210464	F_21	-3.095609	46.331211	F_29	-2.849333	46.199963
F_6	-2.883937	46.048565	F_14	-3.045102	46.234268	F_22	-3.09705	46.333191	F_30	-2.849604	46.199963
F_7	-2.910029	46.06953	F_15	-3.046875	46.237518	F_23	-3.098136	46.335125	F_31	-2.849604	46.199905
F_8	-2.984187	46.150455	F_16	-3.052912	46.252522	F_24	-2.954803	46.342106	F_32	-2.801539	46.198956

Toutes les coordonnées sont exprimées en degrés décimaux dans le système géodésique WGS84

Façade SA - Golfe de Gascogne Sud (GGS)

Coordonnées géographiques



- Zones de projets éolien en mer en service / en développement
- Zones prioritaires pour le développement de l'éolien en mer à l'horizon 10 ans
- ▨ Zones prioritaires pour le développement de l'éolien en mer à l'horizon 2050
- Aires d'études pour le raccordement des zones prioritaires à l'éolien en mer à l'horizon 10 ans
- Limite extérieure de la mer territoriale (12 Nq)
- Limite de façade maritime

Poste RTE
● 225kV

Ligne RTE
— 225kV

Point	Longitude	Latitude
A_1	-2.882563	46.049755
A_2	-2.750727	46.048801
A_3	-2.750727	46.001125
A_4	-2.709529	46.000172
A_5	-2.708155	45.964863
A_6	-2.602412	45.935265
A_7	-2.603785	45.867413
A_8	-2.791926	45.869324

Point	Longitude	Latitude
A_9	-2.791926	45.89896
A_10	-2.839991	45.953407
A_11	-2.857844	46.018295
A_12	-2.857844	46.019249
A_13	-2.882563	46.049755

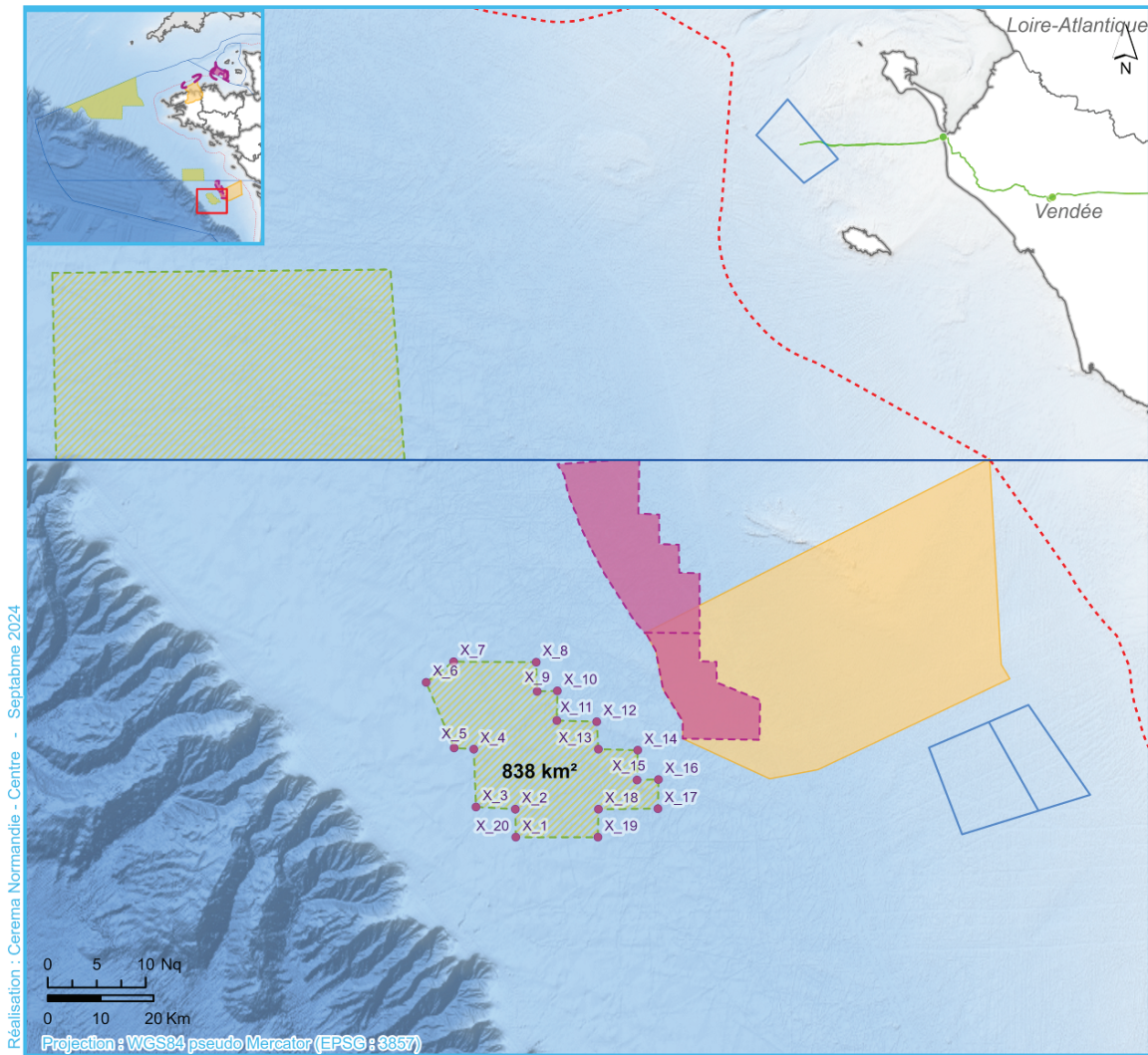
Point	Longitude	Latitude
G_1	-2.883037	46.049578
G_2	-2.04068	46.344481
G_3	-2.012295	45.995696
G_4	-1.991188	45.97142
G_5	-2.460882	45.816455
G_6	-2.579027	45.800892
G_7	-2.792498	45.869511
G_8	-2.790667	45.900101

Point	Longitude	Latitude
G_9	-2.840106	45.953594
G_10	-2.857501	46.01848
G_11	-2.883037	46.049578

Toutes les coordonnées sont exprimées en degrés décimaux dans le système géodésique WGS84

Façade SA - Golfe de Gascogne Ouest (GGO)

Coordonnées géographiques

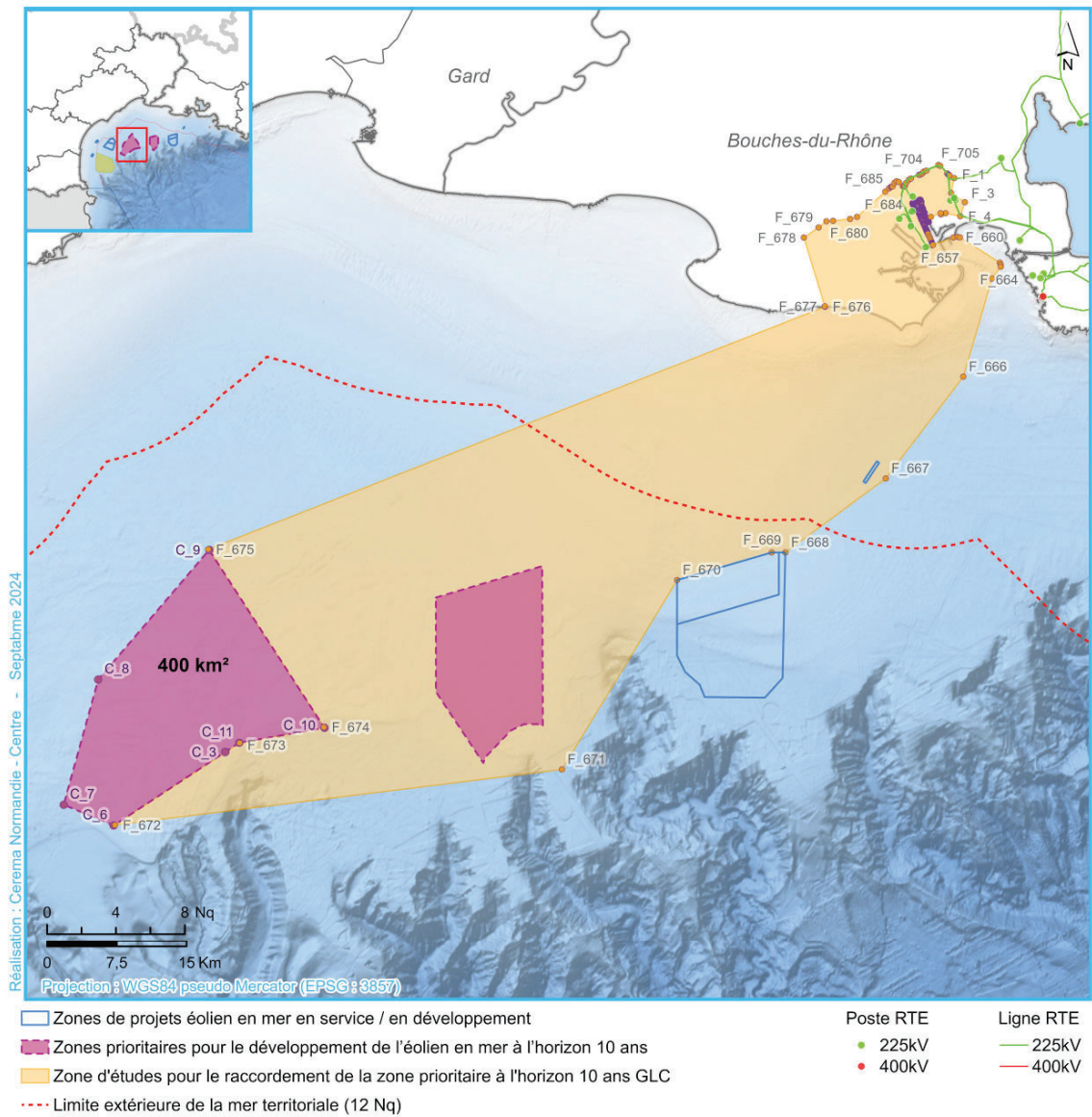


Point	Longitude	Latitude	Point	Longitude	Latitude	Point	Longitude	Latitude
X_1	-3.200148	45.701096	X_10	-3.098524	45.950863	X_19	-2.999647	45.701096
X_2	-3.201521	45.749027	X_11	-3.099897	45.900234	X_20	-3.200148	45.701096
X_3	-3.297651	45.752861	X_12	-3.002394	45.898323			
X_4	-3.303144	45.851471	X_13	-2.998274	45.851471			
X_5	-3.35121	45.853386	X_14	-2.902143	45.84956			
X_6	-3.419874	45.965183	X_15	-2.903517	45.798836			
X_7	-3.352583	46.000488	X_16	-2.851331	45.799793			
X_8	-3.150709	45.999535	X_17	-2.852705	45.749989			
X_9	-3.147963	45.949905	X_18	-2.998274	45.749027			

Toutes les coordonnées sont exprimées en degrés décimaux dans le système géodésique WGS84

Façade MED - Golfe du Lion Centre (GLC)

Coordonnées géographiques



Toutes les coordonnées sont exprimées en degrés décimaux dans le système géodésique WGS84

Façade MED - Golfe du Lion Centre (GLC)

Zone prioritaire au développement de l'éolien en mer

Point	Longitude	Latitude	Point	Longitude	Latitude
C_1	3,959523	42,930122	C_7	3,727437	42,870003
C_2	3,941196	42,921181	C_8	3,773157	42,991287
C_3	3,941196	42,921181	C_9	3,919877	43,116756
C_4	3,940989	42,921082	C_10	4,072406	42,944469
C_5	3,94093	42,921055	C_11	3,959523	42,930122
C_6	3,793601	42,849796			

Zone d'études maritime et terrestre pour le raccordement

Point	Longitude	Latitude	Point	Longitude	Latitude	Point	Longitude	Latitude	Point	Longitude	Latitude	Point	Longitude	Latitude
F_1	4,905372	43,475033	F_53	4,866813	43,434361	F_105	4,865435	43,441032	F_157	4,863418	43,446278	F_209	4,860478	43,450396
F_2	4,90105	43,460609	F_54	4,866611	43,434547	F_106	4,865449	43,441085	F_158	4,863376	43,446299	F_210	4,86035	43,450578
F_3	4,919423	43,451685	F_55	4,866533	43,434605	F_107	4,865478	43,441128	F_159	4,86333	43,446313	F_211	4,860264	43,450726
F_4	4,913416	43,438241	F_56	4,866395	43,434666	F_108	4,865626	43,441288	F_160	4,863278	43,446346	F_212	4,860205	43,450793
F_5	4,893993	43,441207	F_57	4,866293	43,434734	F_109	4,865686	43,441316	F_161	4,863239	43,446455	F_213	4,860173	43,450873
F_6	4,887862	43,439964	F_58	4,866358	43,434889	F_110	4,865876	43,441342	F_162	4,863205	43,446495	F_214	4,860168	43,450947
F_7	4,887218	43,441238	F_59	4,866442	43,435195	F_111	4,865945	43,441343	F_163	4,863122	43,446539	F_215	4,860193	43,451014
F_8	4,874419	43,437522	F_60	4,866495	43,435457	F_112	4,865993	43,441331	F_164	4,862803	43,446608	F_216	4,860249	43,451081
F_9	4,871578	43,432808	F_61	4,866502	43,435559	F_113	4,866051	43,441302	F_165	4,862746	43,446632	F_217	4,860328	43,451114
F_10	4,871493	43,432806	F_62	4,866498	43,435652	F_114	4,866099	43,441244	F_166	4,862649	43,446721	F_218	4,86037	43,451187
F_11	4,871273	43,432789	F_63	4,866481	43,43575	F_115	4,866123	43,441201	F_167	4,862436	43,446818	F_219	4,860378	43,451232
F_12	4,871063	43,432762	F_64	4,866341	43,43621	F_116	4,866158	43,441167	F_168	4,862248	43,446922	F_220	4,860358	43,451311
F_13	4,870722	43,432686	F_65	4,866221	43,436491	F_117	4,866179	43,441302	F_169	4,862211	43,446953	F_221	4,860572	43,451512
F_14	4,870468	43,432604	F_66	4,866122	43,436768	F_118	4,866174	43,441352	F_170	4,862193	43,446989	F_222	4,860586	43,45154
F_15	4,870142	43,432497	F_67	4,866076	43,436992	F_119	4,866139	43,441543	F_171	4,86219	43,44702	F_223	4,860646	43,451594
F_16	4,870003	43,432441	F_68	4,866072	43,437096	F_120	4,866098	43,441674	F_172	4,862221	43,447092	F_224	4,860726	43,451641
F_17	4,869804	43,432399	F_69	4,866005	43,43732	F_121	4,866060	43,441735	F_173	4,862243	43,447114	F_225	4,860825	43,45167
F_18	4,86971	43,432352	F_70	4,866136	43,437531	F_122	4,866021	43,441786	F_174	4,862284	43,447125	F_226	4,860909	43,451672
F_19	4,869406	43,432295	F_71	4,866173	43,437641	F_123	4,865935	43,441864	F_175	4,86236	43,447221	F_227	4,860992	43,451665
F_20	4,868887	43,432225	F_72	4,866217	43,43774	F_124	4,865912	43,441915	F_176	4,862364	43,447229	F_228	4,861086	43,451635
F_21	4,868683	43,432185	F_73	4,866321	43,437931	F_125	4,865956	43,441996	F_177	4,862368	43,447237	F_229	4,861291	43,451529
F_22	4,868455	43,432148	F_74	4,866493	43,438306	F_126	4,865939	43,442023	F_178	4,862428	43,447341	F_230	4,861337	43,451523
F_23	4,86838	43,432154	F_75	4,866518	43,438374	F_127	4,865897	43,442036	F_179	4,862411	43,447419	F_231	4,861562	43,451529
F_24	4,868284	43,432175	F_76	4,866533	43,43848	F_128	4,865763	43,442053	F_180	4,86241	43,447463	F_232	4,861924	43,451574
F_25	4,868191	43,432202	F_77	4,866531	43,438569	F_129	4,86568	43,442069	F_181	4,862435	43,447719	F_233	4,862004	43,451592
F_26	4,8681	43,432242	F_78	4,866395	43,438925	F_130	4,865359	43,44217	F_182	4,862424	43,447762	F_234	4,862041	43,451611
F_27	4,868022	43,43229	F_79	4,866314	43,439084	F_131	4,865257	43,442211	F_183	4,862331	43,447922	F_235	4,862065	43,45164
F_28	4,8679	43,432383	F_80	4,866289	43,439108	F_132	4,864986	43,442341	F_184	4,862294	43,448002	F_236	4,862073	43,451676
F_29	4,867865	43,432414	F_81	4,866232	43,439101	F_133	4,8649	43,442396	F_185	4,862259	43,448043	F_237	4,862052	43,451782
F_30	4,86783	43,432456	F_82	4,866159	43,439068	F_134	4,864852	43,442437	F_186	4,86219	43,448107	F_238	4,862022	43,451819
F_31	4,867798	43,432497	F_83	4,865965	43,438938	F_135	4,864793	43,442501	F_187	4,862084	43,44817	F_239	4,861821	43,45217
F_32	4,867764	43,432581	F_84	4,865834	43,43894	F_136	4,864719	43,442637	F_188	4,86192	43,448246	F_240	4,861608	43,452507
F_33	4,867712	43,432691	F_85	4,865774	43,438973	F_137	4,864647	43,442827	F_189	4,861884	43,448281	F_241	4,861548	43,45259
F_34	4,867672	43,432746	F_86	4,865782	43,439039	F_138	4,864555	43,443158	F_190	4,86178	43,448427	F_242	4,86097	43,453544
F_35	4,867567	43,432798	F_87	4,865853	43,439162	F_139	4,864478	43,443394	F_191	4,861698	43,448525	F_243	4,860901	43,453581
F_36	4,86745	43,432827	F_88	4,86587	43,439213	F_140	4,864401	43,443588	F_192	4,86151	43,448699	F_244	4,860889	43,453668
F_37	4,867365	43,432854	F_89	4,865826	43,439319	F_141	4,864331	43,443793	F_193	4,861407	43,448811	F_245	4,860862	43,453731
F_38	4,867251	43,432879	F_90	4,865843	43,439367	F_142	4,864232	43,444321	F_194	4,861267	43,448989	F_246	4,860778	43,453874
F_39	4,867178	43,432945	F_91	4,865886	43,439406	F_143	4,864165	43,444527	F_195	4,861205	43,449055	F_247	4,860652	43,454039
F_40	4,867146	43,433025	F_92	4,865993	43,439476	F_144	4,86413	43,444731	F_196	4,861041	43,449322	F_248	4,860627	43,454058
F_41	4,867146	43,433106	F_93	4,866004	43,439529	F_145	4,864056	43,444927	F_197	4,86099	43,449393	F_249	4,860575	43,45408
F_42	4,867167	43,433222	F_94	4,865868	43,439824	F_146	4,864038	43,445003	F_198	4,860903	43,449455	F_250	4,860439	43,454092
F_43	4,86719	43,433338	F_95	4,865829	43,439927	F_147	4,864017	43,445109	F_199	4,86083	43,449546	F_251	4,860214	43,454094
F_44	4,867237	43,433615	F_96	4,86565	43,440324	F_148	4,863987	43,445376	F_200	4,860727	43,449708	F_252	4,860078	43,454077
F_45	4,867241	43,433717	F_97	4,865593	43,440388	F_149	4,863964	43,44546	F_201	4,860678	43,449818	F_253	4,860033	43,454064
F_46	4,867223	43,433773	F_98	4,86554	43,440375	F_150	4,863921	43,44555	F_202	4,860665	43,449858	F_254	4,860011	43,454052
F_47	4,867165	43,433808	F_99	4,865486	43,440373	F_151	4,863773	43,445741	F_203	4,860665	43,449894	F_255	4,859971	43,454012
F_48	4,867078	43,433925	F_100	4,865469	43,440408	F_152	4,863662	43,445868	F_204	4,860686	43,44997	F_256	4,859935	43,454001
F_49	4,867058	43,434016	F_101	4,865496	43,440529	F_153	4,863634	43,445934	F_205	4,860689	43,450012	F_257	4,859837	43,454009
F_50	4,867052	43,434127	F_102	4,865498	43,440607	F_154	4,863634	43,446029	F_206	4,86061	43,450169	F_258	4,859748	43,454003
F_51	4,867022	43,434213	F_103	4,86548	43,440749	F_155	4,863613	43,446081	F_207	4,860582	43,450252	F_259	4,859593	43,45394
F_52	4,866936	43,434263	F_104	4,865435	43,440962	F_156	4,863473	43,446231	F_208	4,860557	43,450299	F_260	4,859439	43,453908

Toutes les coordonnées sont exprimées en degrés décimaux dans le système géodésique WGS84

Façade MED - Golfe du Lion Centre (GLC)

Zone d'études maritime et terrestre pour le raccordement

Réalisation : Cerema Normandie - Centre - Septembre 2024

Point	Longitude	Latitude	Point	Longitude	Latitude	Point	Longitude	Latitude	Point	Longitude	Latitude	Point	Longitude	Latitude
F_261	4,859383	43,453904	F_322	4,855177	43,452058	F_383	4,85133	43,44872	F_444	4,858154	43,442162	F_505	4,862159	43,435185
F_262	4,859246	43,453908	F_323	4,854967	43,451977	F_384	4,851415	43,448599	F_445	4,858191	43,442039	F_506	4,862226	43,435177
F_263	4,859183	43,453949	F_324	4,854923	43,452042	F_385	4,851485	43,448469	F_446	4,858278	43,441847	F_507	4,86226	43,435126
F_264	4,859161	43,453994	F_325	4,854837	43,452084	F_386	4,851603	43,448185	F_447	4,858569	43,441374	F_508	4,862235	43,435091
F_265	4,859087	43,453967	F_326	4,854818	43,452205	F_387	4,851735	43,447907	F_448	4,85867	43,441235	F_509	4,862187	43,435049
F_266	4,859059	43,453959	F_327	4,85478	43,452313	F_388	4,85181	43,447784	F_449	4,858771	43,441075	F_510	4,862157	43,434998
F_267	4,859037	43,453857	F_328	4,854732	43,452366	F_389	4,851939	43,447501	F_450	4,858803	43,441001	F_511	4,862132	43,434887
F_268	4,859008	43,453825	F_329	4,854526	43,452299	F_390	4,852025	43,447392	F_451	4,858846	43,440865	F_512	4,862134	43,434825
F_269	4,858967	43,453803	F_330	4,854391	43,452261	F_391	4,85209	43,44727	F_452	4,858887	43,440794	F_513	4,862154	43,434762
F_270	4,858884	43,453773	F_331	4,854251	43,452231	F_392	4,85223	43,447077	F_453	4,859083	43,440528	F_514	4,86218	43,434714
F_271	4,858832	43,453744	F_332	4,854139	43,452193	F_393	4,852374	43,446819	F_454	4,859233	43,440266	F_515	4,862239	43,434637
F_272	4,858746	43,453656	F_333	4,854054	43,452151	F_394	4,85236	43,446785	F_455	4,859347	43,440113	F_516	4,862338	43,434551
F_273	4,858684	43,453622	F_334	4,853985	43,45213	F_395	4,852317	43,446755	F_456	4,859405	43,440026	F_517	4,862375	43,434553
F_274	4,858523	43,453556	F_335	4,853909	43,452122	F_396	4,852287	43,446635	F_457	4,859718	43,439491	F_518	4,862395	43,434575
F_275	4,858391	43,453486	F_336	4,853831	43,452089	F_397	4,852404	43,446637	F_458	4,859964	43,439414	F_519	4,862368	43,434638
F_276	4,858338	43,453443	F_337	4,853548	43,451987	F_398	4,852482	43,44662	F_459	4,860107	43,438916	F_520	4,862375	43,434673
F_277	4,858275	43,453375	F_338	4,853364	43,451873	F_399	4,852583	43,446533	F_460	4,860324	43,438514	F_521	4,862393	43,4347
F_278	4,858238	43,453361	F_339	4,853363	43,451853	F_400	4,852595	43,44651	F_461	4,860436	43,43834	F_522	4,862422	43,434717
F_279	4,858174	43,453349	F_340	4,853431	43,451752	F_401	4,852666	43,446406	F_462	4,860612	43,438018	F_523	4,862454	43,434725
F_280	4,857934	43,453316	F_341	4,853444	43,451694	F_402	4,852732	43,446337	F_463	4,860668	43,437936	F_524	4,862496	43,434726
F_281	4,857856	43,453295	F_342	4,853393	43,451649	F_403	4,85282	43,446261	F_464	4,860822	43,437596	F_525	4,862536	43,434701
F_282	4,857398	43,453223	F_343	4,853304	43,45162	F_404	4,852898	43,446204	F_465	4,860898	43,437498	F_526	4,862748	43,434414
F_283	4,857157	43,453179	F_344	4,853215	43,451587	F_405	4,852939	43,446184	F_466	4,860954	43,437439	F_527	4,862855	43,434236
F_284	4,857114	43,453164	F_345	4,853109	43,451604	F_406	4,852958	43,446147	F_467	4,860996	43,437374	F_528	4,863171	43,433776
F_285	4,857083	43,453133	F_346	4,853032	43,451662	F_407	4,853042	43,446081	F_468	4,86104	43,43728	F_529	4,863242	43,433664
F_286	4,857054	43,453069	F_347	4,852986	43,451726	F_408	4,853142	43,445991	F_469	4,861059	43,437202	F_530	4,86341	43,433342
F_287	4,857052	43,453028	F_348	4,852933	43,45177	F_409	4,853348	43,445826	F_470	4,861163	43,437098	F_531	4,863611	43,433026
F_288	4,857088	43,45295	F_349	4,85283	43,451756	F_410	4,853464	43,445746	F_471	4,861187	43,437054	F_532	4,863698	43,432832
F_289	4,857094	43,452873	F_350	4,852568	43,451683	F_411	4,853703	43,445611	F_472	4,86127	43,436847	F_533	4,863872	43,432561
F_290	4,857073	43,452843	F_351	4,852314	43,45163	F_412	4,853974	43,44541	F_473	4,861376	43,436619	F_534	4,864194	43,431981
F_291	4,857038	43,452824	F_352	4,852177	43,451594	F_413	4,854078	43,445343	F_474	4,861511	43,436416	F_535	4,864342	43,431747
F_292	4,856991	43,452821	F_353	4,851915	43,451498	F_414	4,854191	43,445281	F_475	4,861515	43,43639	F_536	4,864437	43,431537
F_293	4,856962	43,452826	F_354	4,851805	43,451446	F_415	4,8543	43,445208	F_476	4,861486	43,436333	F_537	4,864471	43,431514
F_294	4,856903	43,452867	F_355	4,85167	43,451405	F_416	4,854569	43,444995	F_477	4,861457	43,436303	F_538	4,864502	43,431423
F_295	4,856874	43,452937	F_356	4,851418	43,451364	F_417	4,854783	43,444864	F_478	4,861407	43,436277	F_539	4,864527	43,431386
F_296	4,856846	43,452976	F_357	4,851315	43,451326	F_418	4,854854	43,444794	F_479	4,861452	43,436219	F_540	4,864628	43,431311
F_297	4,856662	43,452977	F_358	4,851199	43,451312	F_419	4,855222	43,444532	F_480	4,861472	43,436194	F_541	4,864664	43,431263
F_298	4,856582	43,452961	F_359	4,851185	43,451312	F_420	4,855306	43,444505	F_481	4,861511	43,436186	F_542	4,864708	43,431141
F_299	4,856522	43,452908	F_360	4,850843	43,451195	F_421	4,855407	43,444489	F_482	4,861604	43,436162	F_543	4,864902	43,430804
F_300	4,856475	43,452827	F_361	4,850531	43,451101	F_422	4,855488	43,444483	F_483	4,861642	43,436147	F_544	4,865077	43,430527
F_301	4,856439	43,452793	F_362	4,850056	43,450956	F_423	4,855553	43,444454	F_484	4,861677	43,43612	F_545	4,865146	43,430441
F_302	4,856394	43,452774	F_363	4,849965	43,450911	F_424	4,855635	43,444401	F_485	4,861697	43,436087	F_546	4,865314	43,430188
F_303	4,85632	43,452778	F_364	4,849917	43,450872	F_425	4,855757	43,444275	F_486	4,861709	43,436011	F_547	4,865523	43,429809
F_304	4,856228	43,452795	F_365	4,849916	43,450822	F_426	4,855788	43,444209	F_487	4,861701	43,43597	F_548	4,865734	43,42946
F_305	4,856134	43,452788	F_366	4,849943	43,450761	F_427	4,855796	43,44412	F_488	4,861653	43,435867	F_549	4,865839	43,429265
F_306	4,856042	43,452758	F_367	4,850012	43,450682	F_428	4,855861	43,444059	F_489	4,861656	43,435806	F_550	4,866012	43,429011
F_307	4,855968	43,452721	F_368	4,850212	43,450397	F_429	4,855945	43,444004	F_490	4,86167	43,435782	F_551	4,866127	43,428827
F_308	4,855895	43,452656	F_369	4,850262	43,450298	F_430	4,856296	43,443686	F_491	4,861729	43,435716	F_552	4,866418	43,428275
F_309	4,855861	43,452629	F_370	4,850325	43,45015	F_431	4,856315	43,443683	F_492	4,861861	43,435633	F_553	4,86681	43,427641
F_310	4,855781	43,452608	F_371	4,85032	43,450103	F_432	4,856661	43,44344	F_493	4,861883	43,435663	F_554	4,867013	43,427323
F_311	4,855687	43,452586	F_372	4,850269	43,450069	F_433	4,856799	43,443337	F_494	4,861861	43,435682	F_555	4,867037	43,427267
F_312	4,855593	43,452593	F_373	4,850268	43,450039	F_434	4,856805	43,443247	F_495	4,861831	43,435731	F_556	4,867073	43,427204
F_313	4,855521	43,452623	F_374	4,850329	43,450037	F_435	4,856975	43,443171	F_496	4,861836	43,435756	F_557	4,867121	43,427129
F_314	4,855476	43,452615	F_375	4,850396	43,450024	F_436	4,857112	43,443057	F_497	4,861888	43,435765	F_558	4,867161	43,427058
F_315	4,855424	43,452572	F_376	4,850536	43,449896	F_437	4,857226	43,442921	F_498	4,861952	43,435696	F_559	4,86721	43,426998
F_316	4,855334	43,452542	F_377	4,850759	43,449589	F_438	4,857304	43,442884	F_499	4,862036	43,435532	F_560	4,867287	43,426894
F_317	4,855062	43,452473	F_378	4,850839	43,449462	F_439	4,857486	43,442769	F_500	4,862041	43,435485	F_561	4,867368	43,426788
F_318	4,855014	43,452458	F_379	4,851027	43,449231	F_440	4,857681	43,442658	F_501	4,862006	43,435438	F_562	4,867401	43,426755
F_319	4,855087	43,452267	F_380	4,8511	43,449099	F_441	4,857843	43,442529	F_502	4,862011	43,435396	F_563	4,867438	43,426728
F_320	4,85516	43,452146	F_381	4,851183	43,44899	F_442	4,857974	43,44241	F_503	4,862076	43,435325	F_564	4,86748	43,426715
F_321	4,855127	43,452115	F_382	4,851266	43,448864	F_443	4,858094	43,442256	F_504	4,862108	43,435205	F_565	4,86754	43,426697

Toutes les coordonnées sont exprimées en degrés décimaux dans le système géodésique WGS84

Façade MED - Golfe du Lion Centre (GLC)
Zone d'études maritime et terrestre pour le raccordement

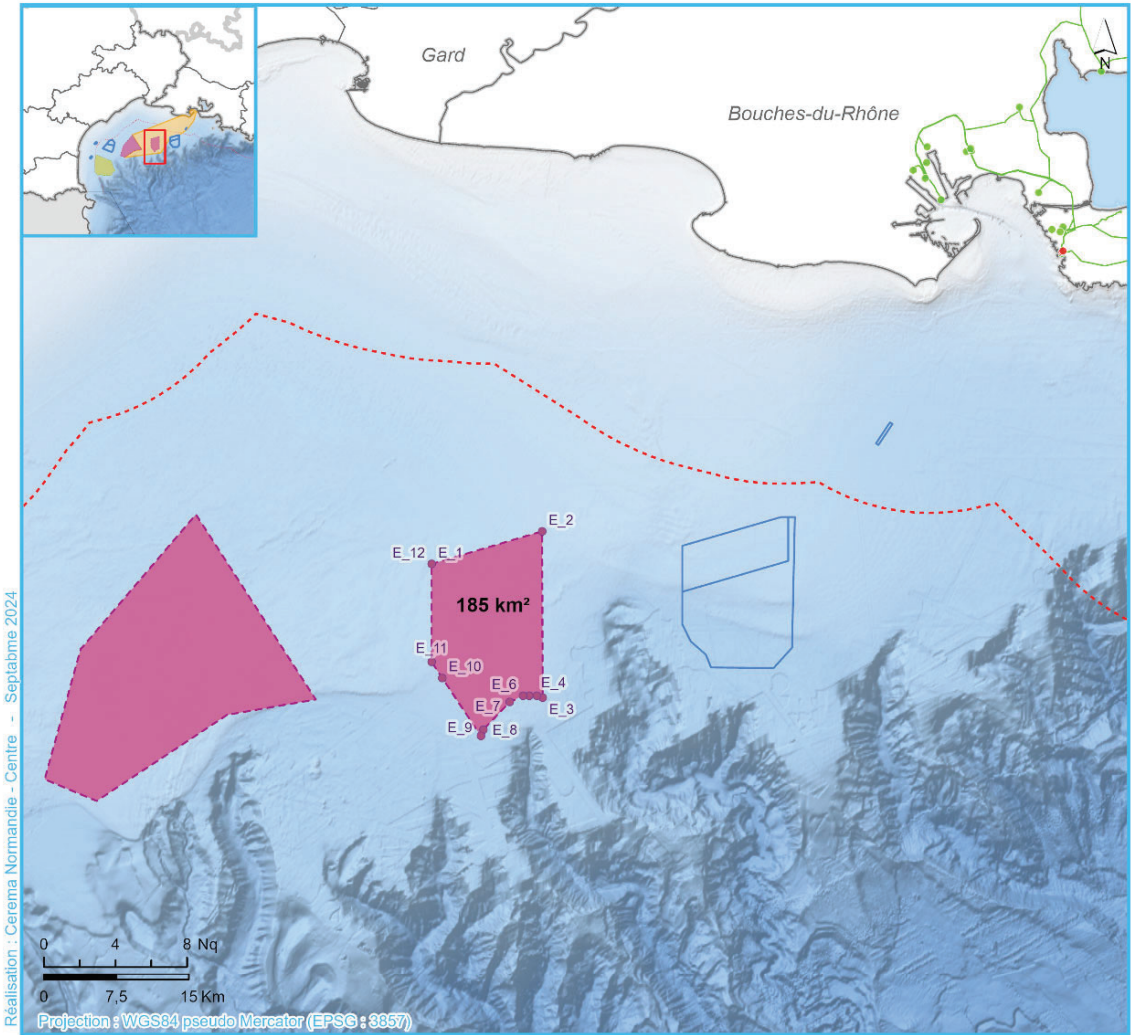
Réalisation : Cerema Normandie - Centre - Septembre 2024

Point	Longitude	Latitude	Point	Longitude	Latitude	Point	Longitude	Latitude
F_566	4,867597	43,426611	F_627	4,87085	43,421297	F_688	4,823258	43,466913
F_567	4,867649	43,426503	F_628	4,87088	43,421277	F_689	4,823782	43,467099
F_568	4,867699	43,426361	F_629	4,871968	43,419462	F_690	4,82627	43,470406
F_569	4,867732	43,426301	F_630	4,873054	43,417646	F_691	4,828932	43,47189
F_570	4,867814	43,426219	F_631	4,874142	43,415832	F_692	4,832031	43,471238
F_571	4,867869	43,426141	F_632	4,875229	43,414017	F_693	4,837204	43,467147
F_572	4,867862	43,426079	F_633	4,875203	43,413997	F_694	4,839153	43,466725
F_573	4,867842	43,426018	F_634	4,875958	43,41275	F_695	4,840116	43,467079
F_574	4,867837	43,425959	F_635	4,87585	43,41267	F_696	4,841674	43,470201
F_575	4,867902	43,425802	F_636	4,875903	43,412604	F_697	4,84527	43,473255
F_576	4,868096	43,42553	F_637	4,875916	43,41256	F_698	4,847862	43,474399
F_577	4,8682	43,425383	F_638	4,875912	43,412519	F_699	4,85884	43,477997
F_578	4,868242	43,425211	F_639	4,875881	43,412416	F_700	4,859833	43,478081
F_579	4,868337	43,425119	F_640	4,875877	43,412367	F_701	4,861629	43,478666
F_580	4,868437	43,424911	F_641	4,875878	43,412319	F_702	4,863535	43,479539
F_581	4,868613	43,424643	F_642	4,875916	43,412225	F_703	4,865039	43,481194
F_582	4,868824	43,424221	F_643	4,876003	43,412071	F_704	4,868388	43,482032
F_583	4,868845	43,424126	F_644	4,876098	43,411865	F_705	4,884377	43,487553
F_584	4,868851	43,424071	F_645	4,876223	43,411704	F_706	4,886939	43,486586
F_585	4,868854	43,424027	F_646	4,876297	43,41157	F_707	4,896064	43,479356
F_586	4,868847	43,423967	F_647	4,876373	43,411372	F_708	4,897459	43,478271
F_587	4,868844	43,423899	F_648	4,876489	43,411223	F_709	4,897759	43,478112
F_588	4,868837	43,423839	F_649	4,876551	43,411158	F_710	4,89807	43,477987
F_589	4,868837	43,423795	F_650	4,876623	43,411041	F_711	4,898437	43,477889
F_590	4,868861	43,423763	F_651	4,876651	43,410951	F_712	4,898882	43,477734
F_591	4,868886	43,423734	F_652	4,876652	43,410876	F_713	4,899018	43,477614
F_592	4,868941	43,423724	F_653	4,876617	43,410738	F_714	4,89908	43,477496
F_593	4,868988	43,4237	F_654	4,876558	43,410636	F_715	4,899092	43,47736
F_594	4,869027	43,423684	F_655	4,876447	43,410565	F_716	4,905372	43,475033
F_595	4,869062	43,423661	F_656	4,876245	43,41048			
F_596	4,869099	43,423646	F_657	4,876241	43,410479			
F_597	4,869145	43,423624	F_658	4,877336	43,410684			
F_598	4,869196	43,423595	F_659	4,904229	43,417818			
F_599	4,869238	43,423539	F_660	4,909988	43,418304			
F_600	4,869296	43,423476	F_661	4,912841	43,417893			
F_601	4,869346	43,423404	F_662	4,965726	43,39363			
F_602	4,869431	43,42335	F_663	4,96696	43,391612			
F_603	4,86948	43,423307	F_664	4,96696	43,389594			
F_604	4,869508	43,423284	F_665	4,95534	43,378309			
F_605	4,869563	43,42324	F_666	4,917289	43,28383			
F_606	4,869611	43,423191	F_667	4,814708	43,185718			
F_607	4,869689	43,42309	F_668	4,682097	43,114254			
F_608	4,869726	43,423034	F_669	4,663894	43,114254			
F_609	4,869844	43,422769	F_670	4,538894	43,087598			
F_610	4,870055	43,422551	F_671	4,386436	42,904182			
F_611	4,870058	43,422503	F_672	3,795216	42,850337			
F_612	4,870012	43,422388	F_673	3,960169	42,929751			
F_613	4,870012	43,422332	F_674	4,071646	42,945261			
F_614	4,870016	43,422285	F_675	3,918622	43,117257			
F_615	4,870063	43,422168	F_676	4,734298	43,351192			
F_616	4,870085	43,421978	F_677	4,73415	43,351544			
F_617	4,870135	43,421839	F_678	4,706547	43,417693			
F_618	4,870294	43,421538	F_679	4,725932	43,427443			
F_619	4,870394	43,42138	F_680	4,736148	43,433457			
F_620	4,870508	43,421278	F_681	4,744979	43,433764			
F_621	4,870556	43,421257	F_682	4,76746	43,435592			
F_622	4,870721	43,421238	F_683	4,776765	43,437666			
F_623	4,870733	43,421269	F_684	4,814286	43,461923			
F_624	4,870764	43,421295	F_685	4,818947	43,465034			
F_625	4,870796	43,421303	F_686	4,821445	43,466317			
F_626	4,870821	43,421304	F_687	4,82228	43,46663			

Toutes les coordonnées sont exprimées en degrés décimaux dans le système géodésique WGS84

Façade MED - Golfe du Lion Est (GLE)

Coordonnées géographiques



- Zones de projets éolien en mer en service / en développement
- Zones prioritaires pour le développement de l'éolien en mer à l'horizon 10 ans
- Limite extérieure de la mer territoriale (12 Nq)

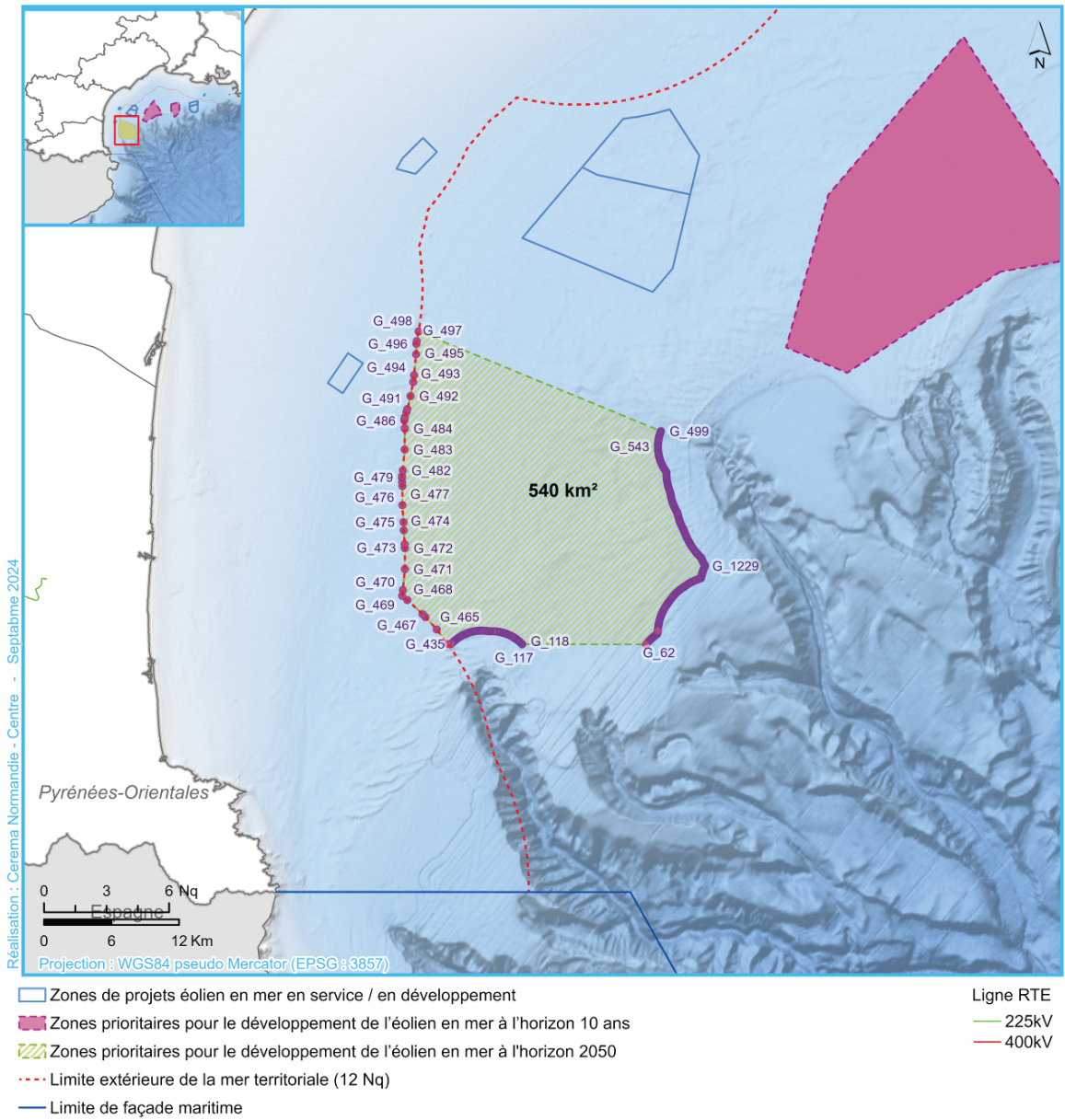
- | Poste RTE | Ligne RTE |
|-----------|-----------|
| ● 225kV | — 225kV |
| ● 400kV | — 400kV |

Point	Longitude	Latitude
E_1	4.219783	43.070721
E_2	4.360347	43.101086
E_3	4.361212	42.946369
E_4	4.353942	42.948063
E_5	4.344225	42.948048
E_6	4.336237	42.948036
E_7	4.319039	42.942024
E_8	4.285474	42.916336
E_9	4.282432	42.910496
E_10	4.23318	42.964603
E_11	4.219807	42.979401
E_12	4.219783	43.070721

Toutes les coordonnées sont exprimées en degrés décimaux dans le système géodésique WGS84

Façade MED - Golfe du Lion Ouest (GLO)

Coordonnées géographiques



Toutes les coordonnées sont exprimées en degrés décimaux dans le système géodésique WGS84

Façade MED - Golfe du Lion Ouest (GLO)
Zone prioritaire au développement de l'éolien en mer

Réalisation : Cerema Normandie - Centre - Septembre 2024

Point	Longitude	Latitude	Point	Longitude	Latitude	Point	Longitude	Latitude	Point	Longitude	Latitude	Point	Longitude	Latitude	Point	Longitude	Latitude
G_1	3.58808	42.64415	G_99	3.57689	42.63407	G_197	3.43086	42.63039	G_205	3.40264	42.64127	G_303	3.37574	42.64074	G_401	3.31630	42.62145
G_2	3.58808	42.64415	G_100	3.57689	42.63407	G_198	3.43077	42.6304	G_206	3.401075	42.64105	G_304	3.37526	42.64032	G_402	3.31929	42.62122
G_3	3.588073	42.644021	G_101	3.576811	42.634161	G_199	3.430727	42.63041	G_207	3.401476	42.64116	G_305	3.376264	42.64033	G_403	3.32086	42.62151
G_4	3.588073	42.644024	G_102	3.576545	42.634274	G_200	3.430701	42.63046	G_208	3.401429	42.64104	G_306	3.374834	42.64057	G_404	3.32063	42.62165
G_5	3.588064	42.643963	G_103	3.576498	42.634232	G_201	3.430701	42.63046	G_209	3.400447	42.641025	G_307	3.374834	42.64057	G_405	3.32062	42.62165
G_6	3.588039	42.643719	G_104	3.576121	42.633881	G_202	3.430629	42.63046	G_300	3.400201	42.641025	G_308	3.374727	42.64011	G_406	3.320587	42.621616
G_7	3.588032	42.643658	G_105	3.576074	42.633835	G_203	3.430593	42.630462	G_301	3.399709	42.641083	G_309	3.374513	42.639623	G_407	3.320551	42.621611
G_8	3.58802	42.643536	G_106	3.576074	42.633835	G_204	3.430487	42.630507	G_302	3.399709	42.641083	G_400	3.374407	42.63977	G_408	3.320407	42.621608
G_9	3.588014	42.643478	G_107	3.57598	42.633747	G_205	3.430273	42.630595	G_303	3.399463	42.641025	G_401	3.3743	42.63952	G_409	3.320344	42.62161
G_10	3.588014	42.643478	G_108	3.575911	42.633755	G_206	3.430106	42.630641	G_304	3.398465	42.641025	G_402	3.373887	42.63919	G_410	3.320295	42.621613
G_11	3.588002	42.643387	G_109	3.575893	42.633795	G_207	3.429974	42.630612	G_305	3.398479	42.641025	G_403	3.373881	42.63919	G_411	3.320285	42.621613
G_12	3.587995	42.643323	G_110	3.575748	42.633526	G_208	3.429625	42.630575	G_306	3.398479	42.641025	G_404	3.373759	42.639153	G_412	3.32027	42.621613
G_13	3.587945	42.643188	G_111	3.575748	42.633526	G_209	3.429409	42.630492	G_307	3.398232	42.641033	G_405	3.373483	42.639154	G_413	3.320188	42.621614
G_14	3.587945	42.643188	G_112	3.575702	42.633484	G_210	3.4293	42.630564	G_308	3.398232	42.641033	G_406	3.373241	42.639159	G_414	3.320146	42.621615
G_15	3.587917	42.643108	G_113	3.575702	42.633484	G_211	3.429426	42.63052	G_309	3.397739	42.641031	G_407	3.373139	42.639109	G_415	3.320109	42.621614
G_16	3.587917	42.643108	G_114	3.57581	42.633392	G_212	3.429206	42.630404	G_310	3.397403	42.641031	G_408	3.372508	42.63862	G_416	3.320077	42.62161
G_17	3.587903	42.64307	G_115	3.575864	42.633305	G_213	3.427784	42.630654	G_311	3.396507	42.641031	G_409	3.372102	42.638321	G_417	3.320075	42.621612
G_18	3.587732	42.643001	G_116	3.575835	42.63332	G_214	3.427562	42.630684	G_312	3.396081	42.641031	G_410	3.371682	42.638618	G_418	3.320082	42.621611
G_19	3.587732	42.643001	G_117	3.480911	42.63336	G_215	3.426849	42.630653	G_313	3.395708	42.641033	G_411	3.371489	42.638615	G_419	3.320082	42.621612
G_20	3.587692	42.642847	G_118	3.480815	42.633633	G_216	3.426844	42.630126	G_314	3.395708	42.641033	G_412	3.370882	42.638606	G_420	3.320082	42.621611
G_21	3.587632	42.642811	G_119	3.426723	42.633701	G_217	3.426573	42.6301174	G_315	3.395621	42.641025	G_413	3.370481	42.638793	G_421	3.320082	42.621612
G_22	3.587632	42.642811	G_120	3.480723	42.633701	G_218	3.426746	42.6301243	G_316	3.395621	42.641025	G_414	3.370084	42.638775	G_422	3.320082	42.621613
G_23	3.587593	42.642804	G_121	3.480192	42.63409	G_219	3.426336	42.630121	G_317	3.394537	42.641025	G_415	3.370084	42.638775	G_423	3.320082	42.621613
G_24	3.587593	42.642804	G_122	3.480192	42.63409	G_220	3.424721	42.6301556	G_318	3.394537	42.641025	G_416	3.369887	42.638769	G_424	3.320082	42.621613
G_25	3.587482	42.64188	G_123	3.480109	42.634148	G_221	3.424493	42.6301624	G_319	3.39429	42.641025	G_417	3.369105	42.638722	G_425	3.320082	42.621613
G_26	3.587482	42.64188	G_124	3.430941	42.63427	G_222	3.424378	42.6301659	G_320	3.39429	42.641025	G_418	3.369008	42.638719	G_426	3.320082	42.621613
G_27	3.58747	42.641842	G_125	3.430941	42.63427	G_223	3.424378	42.6301659	G_321	3.393759	42.641025	G_419	3.368814	42.638754	G_427	3.320082	42.621613
G_28	3.587422	42.641758	G_126	3.429807	42.634327	G_224	3.423995	42.6301792	G_322	3.393503	42.641025	G_420	3.368718	42.638701	G_428	3.320082	42.621613
G_29	3.587375	42.641678	G_127	3.429819	42.634567	G_225	3.423995	42.6301792	G_323	3.393503	42.641025	G_421	3.368335	42.638702	G_429	3.320082	42.621613
G_30	3.587375	42.641678	G_128	3.429804	42.634564	G_226	3.423902	42.6301823	G_324	3.393208	42.641025	G_422	3.368239	42.638719	G_430	3.320082	42.621613
G_31	3.587361	42.641624	G_129	3.429804	42.634564	G_227	3.423807	42.6301823	G_325	3.393208	42.641025	G_423	3.368007	42.638719	G_431	3.320082	42.621613
G_32	3.587361	42.641624	G_130	3.429704	42.634573	G_228	3.423707	42.6301823	G_326	3.393208	42.641025	G_424	3.367956	42.638719	G_432	3.320082	42.621613
G_33	3.587361	42.641624	G_131	3.429694	42.634573	G_229	3.423571	42.6301823	G_327	3.393208	42.641025	G_425	3.367878	42.638719	G_433	3.320082	42.621613
G_34	3.586962	42.640954	G_132	3.429178	42.6348	G_230	3.423405	42.6301919	G_328	3.391591	42.641014	G_426	3.367878	42.638719	G_434	3.320082	42.621613
G_35	3.586954	42.640947	G_133	3.429049	42.630585	G_231	3.423339	42.6301919	G_329	3.391591	42.641014	G_427	3.367722	42.638719	G_435	3.320082	42.621613
G_36	3.586954	42.640947	G_134	3.429042	42.630523	G_232	3.423109	42.630191	G_330	3.390514	42.641009	G_428	3.367722	42.638719	G_436	3.320082	42.621613
G_37	3.586147	42.640423	G_135	3.428828	42.630437	G_233	3.423108	42.630191	G_331	3.390514	42.641009	G_429	3.367645	42.638719	G_437	3.320082	42.621613
G_38	3.586035	42.63998	G_136	3.428811	42.63044	G_234	3.422992	42.630191	G_332	3.390491	42.640997	G_430	3.367645	42.638719	G_438	3.320082	42.621613
G_39	3.586035	42.639923	G_137	3.427789	42.630723	G_235	3.422992	42.630191	G_333	3.390248	42.640997	G_431	3.367538	42.638719	G_439	3.320082	42.621613
G_40	3.586035	42.639912	G_138	3.427701	42.630728	G_236	3.422525	42.630159	G_334	3.390126	42.640997	G_432	3.367261	42.638719	G_440	3.320082	42.621613
G_41	3.586039	42.639755	G_139	3.427522	42.630591	G_237	3.422525	42.630159	G_335	3.390039	42.640997	G_433	3.367109	42.638719	G_441	3.320082	42.621613
G_42	3.586035	42.639526	G_140	3.427432	42.630548	G_238	3.422446	42.630159	G_336	3.390039	42.640997	G_434	3.367053	42.638719	G_442	3.320082	42.621613
G_43	3.5855	42.639469	G_141	3.427354	42.630594	G_239	3.422174	42.630159	G_337	3.390157	42.640997	G_435	3.366843	42.638719	G_443	3.320082	42.621613
G_44	3.58531	42.639355	G_142	3.427354	42.630594	G_240	3.422057	42.630159	G_338	3.390274	42.640997	G_436	3.366833	42.638719	G_444	3.320082	42.621613
G_45	3.585217	42.639297	G_143	3.427197	42.630693	G_241	3.422057	42.630159	G_339	3.390153	42.640997	G_437	3.366833	42.638719	G_445	3.320082	42.621613
G_46	3.585133	42.639259	G_144	3.427119	42.630649	G_242	3.422117	42.630159	G_340	3.390032	42.640997	G_438	3.366829	42.638719	G_446	3.320082	42.621613
G_47	3.585029	42.639179	G_145	3.4268	42.630633	G_243	3.422117	42.630159	G_341	3.390032	42.640997	G_439	3.366829	42.638719	G_447	3.320082	42.621613
G_48	3.585027	42.639175	G_146	3.426872	42.630635	G_244	3.422081	42.630159	G_342	3.390039	42.640997	G_440	3.366824	42.638719	G_448	3.320082	42.621613
G_49	3.58472	42.638985	G_147	3.426859	42.630641	G_245	3.422049	42.630159	G_343	3.390039	42.640997	G_441	3.366824	42.638719	G_449	3.320082	42.621613
G_50	3.584629	42.638943	G_148	3.426879	42.630617	G_246	3.422071	42.630159	G_344	3.390039	42.640997	G_442	3.366824	42.638719	G_450	3.320082	42.621613
G_51	3.584629	42.638943	G_149	3.426879	42.630617	G_247	3.422071	42.630159	G_345	3.390039	42.640997	G_443	3.366824	42.638719	G_451	3.320082	42.621613
G_52	3.584629	42.638943	G_150	3.426868	42.630617	G_248	3.421998	42.630159	G_346	3.390039	42.640997	G_444	3.366824	42.638719	G_452	3.320082	42.621613
G_53	3.584629	42.638943	G_151	3.426839	42.630617	G_249	3.421901	42.630159	G_347	3.390039	42.640997	G_445	3.366824	42.638719	G_453	3.320082	42.621613
G_54	3.584629	42.638943	G_152	3.426839	42.630617	G_250	3.421801	42.630159	G_348	3.390039	42.640997	G_446	3.366824	42.638719	G_454	3.320082	42.621613
G_55	3.584629	42.638943	G_153	3.426839	42.630617	G_251	3.421729	42.630159	G_349	3.390032	42.640997	G_447	3.366824	42.638719	G_455	3.320082	42.621613
G_56	3.584629	42.638943															

Façade MED - Golfe du Lion Ouest (GLO)

Zone prioritaire au développement de l'éolien en mer

Réalisation : Cerema Normandie - Centre - Septembre 2024

Point	Longitude	Latitude	Point	Longitude	Latitude	Point	Longitude	Latitude	Point	Longitude	Latitude	Point	Longitude	Latitude	Point	Longitude	Latitude
G_589	3.58961	42.78287	G_687	3.58923	42.78347	G_785	3.60166	42.75467	G_883	3.60507	42.74846	G_981	3.61301	42.72654	G_1079	3.62202	42.71748
G_590	3.58972	42.78271	G_688	3.58929	42.78329	G_786	3.60166	42.75467	G_884	3.60512	42.74847	G_982	3.61328	42.72637	G_1080	3.62243	42.71699
G_591	3.58979	42.78266	G_689	3.58934	42.78316	G_787	3.60166	42.75467	G_885	3.60512	42.74847	G_983	3.61337	42.72631	G_1081	3.62268	42.71697
G_592	3.58985	42.78183	G_690	3.58933	42.78318	G_788	3.60166	42.75425	G_886	3.60535	42.74837	G_984	3.61349	42.72587	G_1082	3.62265	42.71447
G_593	3.58983	42.78143	G_691	3.58933	42.78318	G_789	3.60166	42.75435	G_887	3.60535	42.74837	G_985	3.61347	42.72621	G_1083	3.62265	42.71447
G_594	3.58925	42.78107	G_692	3.58933	42.78302	G_790	3.60166	42.75435	G_888	3.60542	42.74824	G_986	3.61353	42.72586	G_1084	3.62268	42.71438
G_595	3.58953	42.78013	G_693	3.58933	42.78302	G_791	3.60173	42.75407	G_889	3.60527	42.74805	G_987	3.61412	42.72778	G_1085	3.62274	42.71426
G_596	3.58991	42.78029	G_694	3.58936	42.78289	G_792	3.60173	42.75407	G_890	3.60558	42.74346	G_988	3.61424	42.72758	G_1086	3.62306	42.71392
G_597	3.58967	42.78054	G_695	3.58948	42.78285	G_793	3.60173	42.75402	G_891	3.60561	42.74315	G_989	3.61474	42.72693	G_1087	3.62302	42.71382
G_598	3.58976	42.78097	G_696	3.58953	42.78277	G_794	3.60173	42.75362	G_892	3.60571	42.74293	G_990	3.61477	42.72693	G_1088	3.62306	42.71375
G_599	3.58985	42.78098	G_697	3.58962	42.78268	G_795	3.60173	42.75344	G_893	3.60583	42.74285	G_991	3.61493	42.72673	G_1089	3.62308	42.71373
G_600	3.58995	42.78093	G_698	3.58965	42.78268	G_796	3.60173	42.75344	G_894	3.60585	42.74276	G_992	3.61497	42.72653	G_1090	3.62313	42.71370
G_601	3.58996	42.78097	G_699	3.58966	42.78267	G_797	3.60182	42.75361	G_895	3.60597	42.74267	G_993	3.61497	42.72653	G_1091	3.62312	42.71369
G_602	3.58997	42.78097	G_700	3.58966	42.78267	G_798	3.60182	42.75361	G_896	3.60597	42.74268	G_994	3.61509	42.72673	G_1092	3.62349	42.71369
G_603	3.58997	42.78099	G_701	3.58968	42.78256	G_799	3.60182	42.75373	G_897	3.60575	42.74273	G_995	3.61509	42.72673	G_1093	3.62342	42.71364
G_604	3.58999	42.78027	G_702	3.58968	42.78256	G_800	3.60187	42.75367	G_898	3.60585	42.74197	G_996	3.61508	42.72696	G_1094	3.62341	42.71334
G_605	3.58993	42.78243	G_703	3.58969	42.78242	G_801	3.60187	42.75369	G_899	3.60712	42.74124	G_997	3.61539	42.72636	G_1095	3.62387	42.71287
G_606	3.58983	42.7789	G_704	3.58966	42.78234	G_802	3.60186	42.75342	G_900	3.60711	42.74147	G_998	3.61549	42.72598	G_1096	3.62382	42.71287
G_607	3.58949	42.78224	G_705	3.58966	42.78224	G_803	3.60192	42.75308	G_901	3.60725	42.74134	G_999	3.61556	42.72587	G_1097	3.62322	42.71238
G_608	3.58952	42.78648	G_706	3.58962	42.78218	G_804	3.60206	42.75325	G_902	3.60722	42.74134	G_1000	3.61562	42.72546	G_1098	3.62322	42.71238
G_609	3.58951	42.78648	G_707	3.58962	42.78218	G_805	3.60205	42.75276	G_903	3.60742	42.74104	G_1001	3.61562	42.72546	G_1099	3.62342	42.71231
G_610	3.58958	42.78654	G_708	3.58965	42.78203	G_806	3.60201	42.75284	G_904	3.60748	42.74105	G_1002	3.61569	42.72564	G_1100	3.62342	42.71231
G_611	3.58958	42.78654	G_709	3.58965	42.78203	G_807	3.60215	42.75252	G_905	3.60753	42.74094	G_1003	3.61569	42.72564	G_1101	3.62341	42.71232
G_612	3.58958	42.78789	G_710	3.58969	42.78175	G_808	3.60212	42.75246	G_906	3.60757	42.74094	G_1004	3.61591	42.72531	G_1102	3.62341	42.71232
G_613	3.58958	42.78789	G_711	3.58969	42.78175	G_809	3.60216	42.75227	G_907	3.60757	42.74094	G_1005	3.61591	42.72531	G_1103	3.62341	42.71238
G_614	3.58943	42.78775	G_712	3.58972	42.78162	G_810	3.60213	42.75205	G_908	3.60787	42.74079	G_1006	3.61599	42.72519	G_1104	3.62341	42.71239
G_615	3.58943	42.78779	G_713	3.58972	42.78162	G_811	3.60221	42.75129	G_909	3.60787	42.74079	G_1007	3.61608	42.72519	G_1105	3.62341	42.71239
G_616	3.58945	42.78775	G_714	3.58984	42.78107	G_812	3.60222	42.75184	G_910	3.60794	42.74025	G_1008	3.61614	42.72519	G_1106	3.62301	42.71283
G_617	3.58973	42.78656	G_715	3.58992	42.78136	G_813	3.60227	42.75191	G_911	3.60792	42.74022	G_1009	3.61615	42.72502	G_1107	3.62341	42.71284
G_618	3.58987	42.78642	G_716	3.58995	42.78094	G_814	3.60227	42.75191	G_912	3.60803	42.74027	G_1010	3.61626	42.72502	G_1108	3.62341	42.71284
G_619	3.58988	42.78657	G_717	3.58999	42.78093	G_815	3.60233	42.75163	G_913	3.60803	42.74027	G_1011	3.61626	42.72473	G_1109	3.62341	42.71282
G_620	3.58992	42.78913	G_718	3.58999	42.78093	G_816	3.60233	42.75163	G_914	3.60825	42.74013	G_1012	3.61626	42.72487	G_1110	3.62341	42.71282
G_621	3.58997	42.78288	G_719	3.58994	42.78099	G_817	3.60234	42.75146	G_915	3.60825	42.74013	G_1013	3.61643	42.72487	G_1111	3.62341	42.71279
G_622	3.58974	42.78198	G_720	3.58995	42.78048	G_818	3.60244	42.75131	G_916	3.60834	42.73994	G_1014	3.61643	42.72487	G_1112	3.62341	42.71279
G_623	3.58993	42.78288	G_721	3.58998	42.78048	G_819	3.60244	42.75075	G_917	3.60834	42.73994	G_1015	3.61643	42.72486	G_1113	3.62342	42.71282
G_624	3.58989	42.78048	G_722	3.58995	42.78048	G_820	3.60262	42.75063	G_918	3.60832	42.73984	G_1016	3.61657	42.72542	G_1114	3.62342	42.71282
G_625	3.58946	42.78428	G_723	3.58995	42.78068	G_821	3.60266	42.75042	G_919	3.60835	42.73984	G_1017	3.61656	42.72587	G_1115	3.62342	42.71283
G_626	3.58946	42.78451	G_724	3.58998	42.78068	G_822	3.60268	42.75049	G_920	3.60835	42.73984	G_1018	3.61656	42.72587	G_1116	3.62342	42.71283
G_627	3.58936	42.78431	G_725	3.58999	42.78068	G_823	3.60278	42.75013	G_921	3.60838	42.73983	G_1019	3.61656	42.72543	G_1117	3.62343	42.71287
G_628	3.58936	42.78431	G_726	3.58999	42.78068	G_824	3.60278	42.75011	G_922	3.60855	42.73983	G_1020	3.61656	42.72543	G_1118	3.62343	42.71287
G_629	3.58943	42.78425	G_727	3.58999	42.78071	G_825	3.60278	42.75011	G_923	3.60859	42.73983	G_1021	3.61657	42.72543	G_1119	3.62343	42.71287
G_630	3.58957	42.78431	G_728	3.58999	42.78071	G_826	3.60288	42.74996	G_924	3.60859	42.73983	G_1022	3.61657	42.72543	G_1120	3.62343	42.71287
G_631	3.58942	42.78396	G_729	3.58999	42.78064	G_827	3.60288	42.74996	G_925	3.60862	42.73984	G_1023	3.61657	42.72531	G_1121	3.62343	42.71283
G_632	3.58942	42.78396	G_730	3.58999	42.78064	G_828	3.60281	42.74997	G_926	3.60864	42.73987	G_1024	3.61657	42.72531	G_1122	3.62343	42.71283
G_633	3.58947	42.78385	G_731	3.58996	42.78066	G_829	3.60281	42.74997	G_927	3.60866	42.73987	G_1025	3.61654	42.72536	G_1123	3.62343	42.71283
G_634	3.58947	42.78385	G_732	3.58996	42.78066	G_830	3.60299	42.74975	G_928	3.60862	42.73984	G_1026	3.61656	42.72511	G_1124	3.62343	42.71283
G_635	3.58943	42.78389	G_733	3.58992	42.78035	G_831	3.60299	42.74975	G_929	3.60863	42.73984	G_1027	3.61677	42.72511	G_1125	3.62343	42.71283
G_636	3.58973	42.78389	G_734	3.58992	42.78036	G_832	3.60297	42.74972	G_930	3.60861	42.73989	G_1028	3.61674	42.72295	G_1126	3.62343	42.71287
G_637	3.58944	42.78376	G_735	3.58994	42.78035	G_833	3.60297	42.74972	G_931	3.60861	42.73989	G_1029	3.61674	42.72295	G_1127	3.62343	42.71287
G_638	3.58957	42.78376	G_736	3.58991	42.78035	G_834	3.60294	42.74969	G_932	3.60861	42.73987	G_1030	3.61672	42.72275	G_1128	3.62343	42.71281
G_639	3.58957	42.78376	G_737	3.58991	42.78035	G_835	3.60294	42.74969	G_933	3.60861	42.73987	G_1031					